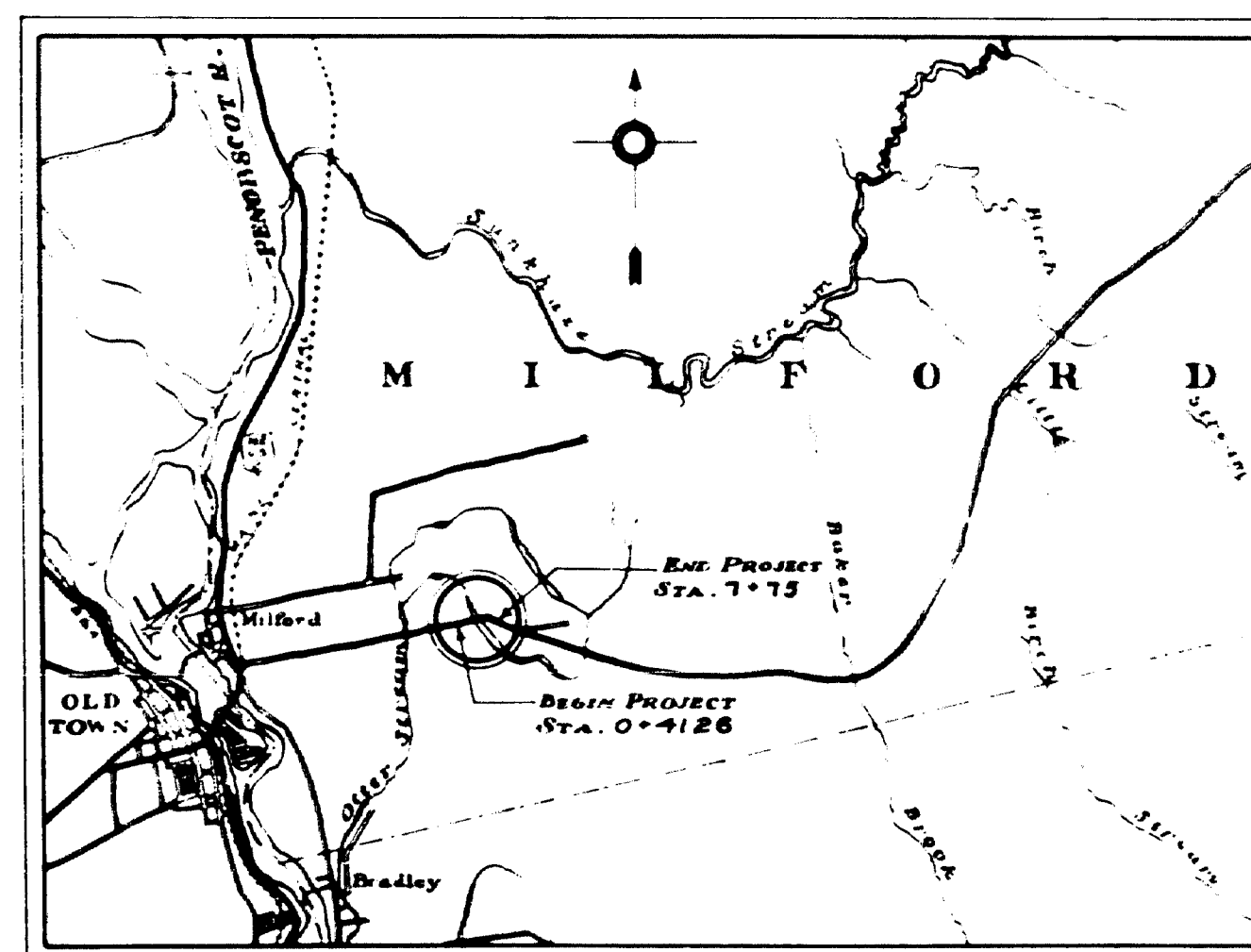


STATE OF MAINE STATE HIGHWAY COMMISSION

PLAN AND PROFILE SECOND OTTER STREAM BRIDGE OVER OTTER STREAM MILFORD PENOBSCOT COUNTY USWPFR PROJECT NO. 20 TOTAL LENGTH 0.138 MILES

| CONVENTIONAL SIGNS | | |
|------------------------|-------|--------------|
| STATE OR NATIONAL LINE | ===== | SURVEY LINE |
| COUNTY LINE | ===== | CULVERT |
| TOWN LINE | ===== | DROP INLET |
| UNFENCED PROPERTY | ===== | TROLLEY POLE |
| FENCE | ===== | POWER POLE |
| RIGHT OF WAY LINE | ===== | TEL. POLE |
| TRAVELED WAY | ===== | MARSH |
| RAILROAD | ===== | TREES |
| RETAINING WALL | ===== | STONE WALL |

| INDEX OF SHEETS | | |
|-----------------|-----|------------------|
| SHEET NO. | 0 | TITLE PAGE |
| SHEET NO. | 1+2 | SURVEY PLANS |
| SHEET NO. | 3 | SUBSTRUCTURE |
| SHEET NO. | 4 | STRESS SHEET |
| SHEET NO. | 5 | STRUCTURAL STEEL |
| SHEET NO. | 6 | STRUCTURAL STEEL |



LOCATION MAP
TRACED FROM USGS ORONO SHEET
SCALE 1:26500

APPROVED:
MAINE STATE HIGHWAY COMMISSION

Paul C. Ruel
CHAIRMAN

Stewart

Wm. O. Bann
CHIEF ENGINEER

APPROVED:
U. S. BUREAU OF PUBLIC ROADS

DISTRICT ENGINEER

CHIEF ENGINEER

DIRECTOR

SKETCH

14CNEF

FIELD RIVETS AND BOLTS

NAME OF STRUCTURE

DATE

ORDER NO.

PAGE NO.

FIELD RIVETS AND BOLTS

NAME OF STRUCTURE

DATE

ORDER NO.

PAGE NO.

FIELD RIVETS AND BOLTS

NAME OF STRUCTURE

DATE

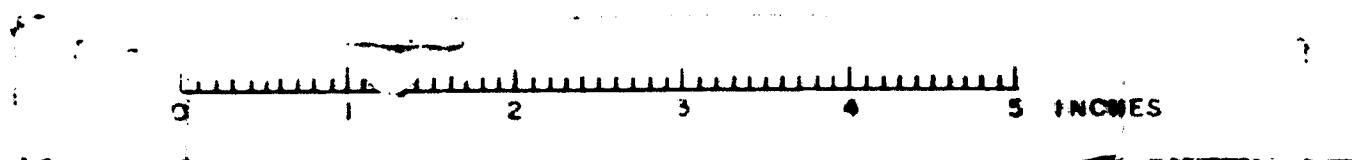
ORDER NO.

PAGE NO.

0 1 2 3 4 5 INCHES

AMERICAN BRIDGE COMPANY
INCORPORATED IN THE STATE OF NEW YORK

| SHEET NO. | NO. OF RIBS | DIAM. | RIVETS | BOLTS | | | GRIP | THICKNESS OF PLATE | LOCATION |
|-------------------------------|-------------|-------|--------|-------|------|-----|------|--------------------|---|
| | | | | TYPE | SIZE | NO. | | | |
| FIELD RIVETS AND BOLTS | 1 | | | | | | | | <div style="border: 1px solid black; padding: 5px;"> <div style="display: flex; justify-content: space-between;"> <div> <small>NAME OF STRUCTURE</small> <div style="border: 1px solid black; padding: 2px;"> <small>UNIT</small> <small>FABRICATION</small> </div> </div> <div> <small>ORDER NO.</small> <div style="border: 1px solid black; padding: 2px;"> <small>304</small> </div> </div> <div> <small>SHEET NO.</small> <div style="border: 1px solid black; padding: 2px;"> <small>EF</small> </div> </div> </div> </div> |
| | 2 | | | | | | | | |
| | 3 | | | | | | | | |
| | 4 | | | | | | | | |
| | 5 | | | | | | | | |
| | 6 | | | | | | | | |
| | 7 | | | | | | | | |
| | 8 | | | | | | | | |
| | 9 | | | | | | | | |
| | 10 | | | | | | | | |
| | 11 | | | | | | | | |
| | 12 | | | | | | | | |
| | 13 | | | | | | | | |
| | 14 | | | | | | | | |
| | 15 | | | | | | | | |
| | 16 | | | | | | | | |
| | 17 | | | | | | | | |
| | 18 | | | | | | | | |
| | 19 | | | | | | | | |
| | 20 | | | | | | | | |
| | 21 | | | | | | | | |
| | 22 | | | | | | | | |
| | 23 | | | | | | | | |
| | 24 | | | | | | | | |



AMERICAN BRIDGE COMPANY

| NO. | DIM. | RIVETS | | BOLTS | | Grip | THICKNESS OF MATERIAL CONNECTED | LOCATION |
|-----|------|--------|------|-------|------|------|---------------------------------|----------|
| | | NO. | SIZE | NO. | SIZE | | | |
| 1 | | | | | | | | |
| 2 | | | | | | | | |
| 3 | | | | | | | | |
| 4 | | | | | | | | |
| 5 | | | | | | | | |
| 6 | | | | | | | | |
| 7 | | | | | | | | |
| 8 | | | | | | | | |
| 9 | | | | | | | | |
| 10 | | | | | | | | |
| 11 | | | | | | | | |
| 12 | | | | | | | | |
| 13 | | | | | | | | |
| 14 | | | | | | | | |
| 15 | | | | | | | | |
| 16 | | | | | | | | |
| 17 | | | | | | | | |
| 18 | | | | | | | | |
| 19 | | | | | | | | |
| 20 | | | | | | | | |
| 21 | | | | | | | | |
| 22 | | | | | | | | |
| 23 | | | | | | | | |
| 24 | | | | | | | | |
| 25 | | | | | | | | |
| 26 | | | | | | | | |
| 27 | | | | | | | | |
| 28 | | | | | | | | |
| 29 | | | | | | | | |
| 30 | | | | | | | | |
| 31 | | | | | | | | |
| 32 | | | | | | | | |
| 33 | | | | | | | | |
| 34 | | | | | | | | |
| 35 | | | | | | | | |
| 36 | | | | | | | | |
| 37 | | | | | | | | |
| 38 | | | | | | | | |
| 39 | | | | | | | | |
| 40 | | | | | | | | |
| 41 | | | | | | | | |
| 42 | | | | | | | | |
| 43 | | | | | | | | |
| 44 | | | | | | | | |
| 45 | | | | | | | | |
| 46 | | | | | | | | |
| 47 | | | | | | | | |
| 48 | | | | | | | | |
| 49 | | | | | | | | |
| 50 | | | | | | | | |
| 51 | | | | | | | | |
| 52 | | | | | | | | |
| 53 | | | | | | | | |
| 54 | | | | | | | | |
| 55 | | | | | | | | |
| 56 | | | | | | | | |
| 57 | | | | | | | | |
| 58 | | | | | | | | |
| 59 | | | | | | | | |
| 60 | | | | | | | | |
| 61 | | | | | | | | |
| 62 | | | | | | | | |
| 63 | | | | | | | | |
| 64 | | | | | | | | |
| 65 | | | | | | | | |
| 66 | | | | | | | | |
| 67 | | | | | | | | |
| 68 | | | | | | | | |
| 69 | | | | | | | | |
| 70 | | | | | | | | |
| 71 | | | | | | | | |
| 72 | | | | | | | | |
| 73 | | | | | | | | |
| 74 | | | | | | | | |
| 75 | | | | | | | | |
| 76 | | | | | | | | |
| 77 | | | | | | | | |
| 78 | | | | | | | | |
| 79 | | | | | | | | |
| 80 | | | | | | | | |
| 81 | | | | | | | | |
| 82 | | | | | | | | |
| 83 | | | | | | | | |
| 84 | | | | | | | | |
| 85 | | | | | | | | |
| 86 | | | | | | | | |
| 87 | | | | | | | | |
| 88 | | | | | | | | |
| 89 | | | | | | | | |
| 90 | | | | | | | | |
| 91 | | | | | | | | |
| 92 | | | | | | | | |
| 93 | | | | | | | | |
| 94 | | | | | | | | |
| 95 | | | | | | | | |
| 96 | | | | | | | | |
| 97 | | | | | | | | |
| 98 | | | | | | | | |
| 99 | | | | | | | | |
| 100 | | | | | | | | |

FIELD RIVETS AND BOLTS

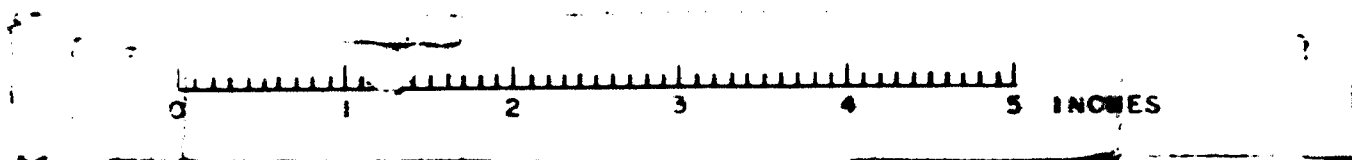
DATE: 1/1/1911

NAME OF STRUCTURE: BRIDGE

DATE: 1/1/1911

ORDER NO. 1000

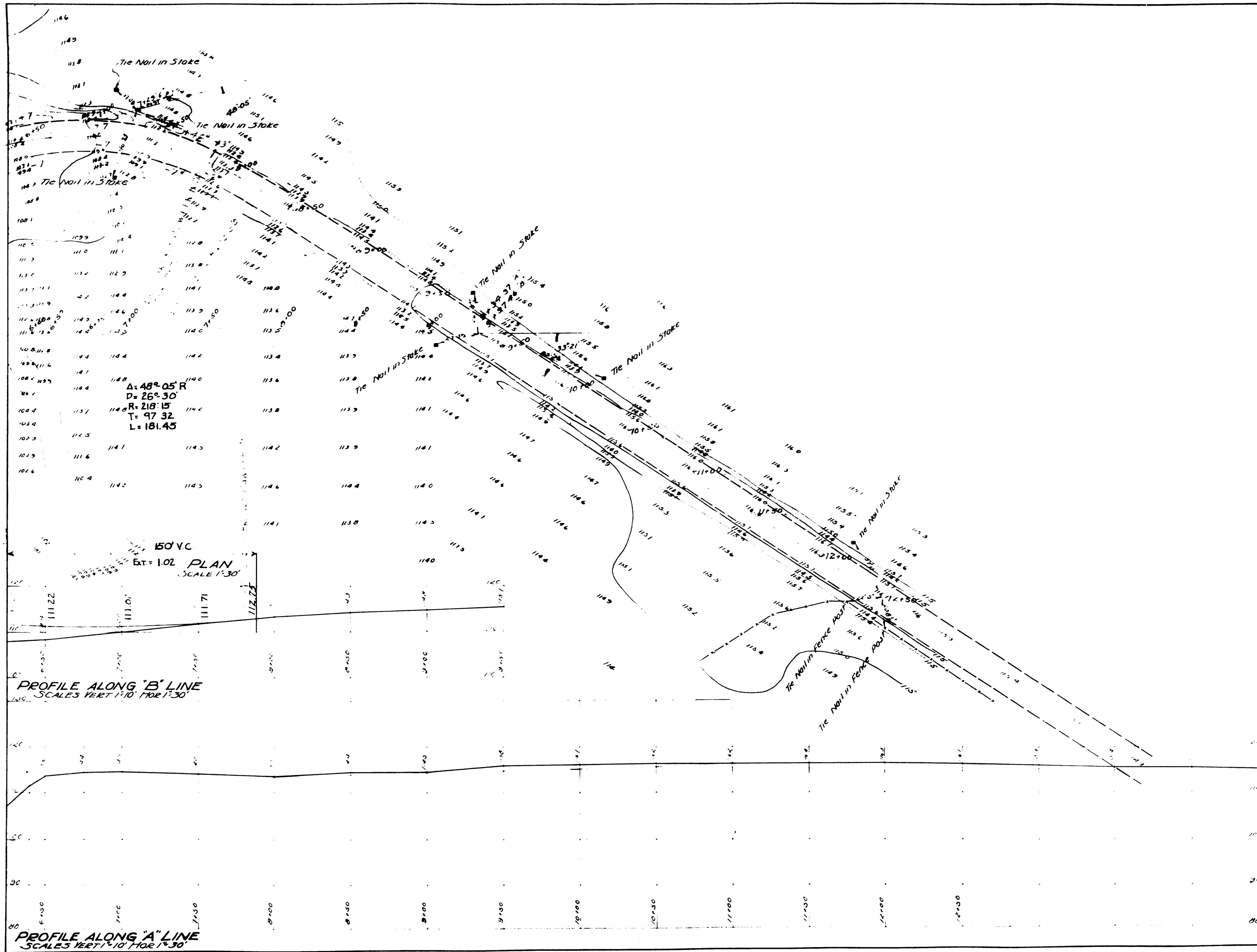
SHEET NO. 1



AMERICAN BRIDGE COMPANY

| NO. P.C. | DIAM. | RIVETS | BOLTS | | GMP | THICKNESS OF MATERIAL CONNECTED | LOCATION |
|-------------|-------|--------|----------------|---------------|-----|---------------------------------------|----------|
| | | | LENGTH HEAD | WASH DRILL | | | |
| 1 | 1 1/2 | 4 | | | | | |
| 2 | 1 1/2 | 4 | | | | | |
| 3 | 1 1/2 | 4 | | | | | |
| 4 | 1 1/2 | 4 | | | | | |
| 5 | 1 1/2 | 4 | | | | | |
| 6 | 1 1/2 | 4 | | | | | |
| 7 | 1 1/2 | 4 | | | | | |
| 8 | 1 1/2 | 4 | | | | | |
| 9 | 1 1/2 | 4 | | | | | |
| 10 | 1 1/2 | 4 | | | | | |
| 11 | 1 1/2 | 4 | | | | | |
| 12 | 1 1/2 | 4 | | | | | |
| 13 | 1 1/2 | 4 | | | | | |
| 14 | 1 1/2 | 4 | | | | | |
| 15 | 1 1/2 | 4 | | | | | |
| 16 | 1 1/2 | 4 | | | | | |
| 17 | 1 1/2 | 4 | | | | | |
| 18 | 1 1/2 | 4 | | | | | |
| 19 | 1 1/2 | 4 | | | | | |
| 20 | 1 1/2 | 4 | | | | | |
| 21 | 1 1/2 | 4 | | | | | |
| 22 | 1 1/2 | 4 | | | | | |
| 23 | 1 1/2 | 4 | | | | | |
| 24 | 1 1/2 | 4 | | | | | |
| 25 | 1 1/2 | 4 | | | | | |
| 26 | 1 1/2 | 4 | | | | | |
| 27 | 1 1/2 | 4 | | | | | |
| 28 | 1 1/2 | 4 | | | | | |
| 29 | 1 1/2 | 4 | | | | | |
| 30 | 1 1/2 | 4 | | | | | |
| 31 | 1 1/2 | 4 | | | | | |
| 32 | 1 1/2 | 4 | | | | | |
| 33 | 1 1/2 | 4 | | | | | |
| 34 | 1 1/2 | 4 | | | | | |
| 35 | 1 1/2 | 4 | | | | | |
| 36 | 1 1/2 | 4 | | | | | |
| 37 | 1 1/2 | 4 | | | | | |
| 38 | 1 1/2 | 4 | | | | | |
| 39 | 1 1/2 | 4 | | | | | |
| 40 | 1 1/2 | 4 | | | | | |
| 41 | 1 1/2 | 4 | | | | | |
| 42 | 1 1/2 | 4 | | | | | |
| 43 | 1 1/2 | 4 | | | | | |
| 44 | 1 1/2 | 4 | | | | | |
| 45 | 1 1/2 | 4 | | | | | |
| 46 | 1 1/2 | 4 | | | | | |
| 47 | 1 1/2 | 4 | | | | | |
| 48 | 1 1/2 | 4 | | | | | |
| 49 | 1 1/2 | 4 | | | | | |
| 50 | 1 1/2 | 4 | | | | | |
| 51 | 1 1/2 | 4 | | | | | |
| 52 | 1 1/2 | 4 | | | | | |
| 53 | 1 1/2 | 4 | | | | | |
| 54 | 1 1/2 | 4 | | | | | |
| 55 | 1 1/2 | 4 | | | | | |
| 56 | 1 1/2 | 4 | | | | | |
| 57 | 1 1/2 | 4 | | | | | |
| 58 | 1 1/2 | 4 | | | | | |
| 59 | 1 1/2 | 4 | | | | | |
| 60 | 1 1/2 | 4 | | | | | |
| 61 | 1 1/2 | 4 | | | | | |
| 62 | 1 1/2 | 4 | | | | | |
| 63 | 1 1/2 | 4 | | | | | |
| 64 | 1 1/2 | 4 | | | | | |
| 65 | 1 1/2 | 4 | | | | | |
| 66 | 1 1/2 | 4 | | | | | |
| 67 | 1 1/2 | 4 | | | | | |
| 68 | 1 1/2 | 4 | | | | | |
| 69 | 1 1/2 | 4 | | | | | |
| 70 | 1 1/2 | 4 | | | | | |
| 71 | 1 1/2 | 4 | | | | | |
| 72 | 1 1/2 | 4 | | | | | |
| 73 | 1 1/2 | 4 | | | | | |
| 74 | 1 1/2 | 4 | | | | | |
| 75 | 1 1/2 | 4 | | | | | |
| 76 | 1 1/2 | 4 | | | | | |
| 77 | 1 1/2 | 4 | | | | | |
| 78 | 1 1/2 | 4 | | | | | |
| 79 | 1 1/2 | 4 | | | | | |
| 80 | 1 1/2 | 4 | | | | | |
| 81 | 1 1/2 | 4 | | | | | |
| 82 | 1 1/2 | 4 | | | | | |
| 83 | 1 1/2 | 4 | | | | | |
| 84 | 1 1/2 | 4 | | | | | |
| 85 | 1 1/2 | 4 | | | | | |
| 86 | 1 1/2 | 4 | | | | | |
| 87 | 1 1/2 | 4 | | | | | |
| 88 | 1 1/2 | 4 | | | | | |
| 89 | 1 1/2 | 4 | | | | | |
| 90 | 1 1/2 | 4 | | | | | |
| 91 | 1 1/2 | 4 | | | | | |
| 92 | 1 1/2 | 4 | | | | | |
| 93 | 1 1/2 | 4 | | | | | |
| 94 | 1 1/2 | 4 | | | | | |
| 95 | 1 1/2 | 4 | | | | | |
| 96 | 1 1/2 | 4 | | | | | |
| 97 | 1 1/2 | 4 | | | | | |
| 98 | 1 1/2 | 4 | | | | | |
| 99 | 1 1/2 | 4 | | | | | |
| 100 | 1 1/2 | 4 | | | | | |

0 1 2 3 4 5 INCHES

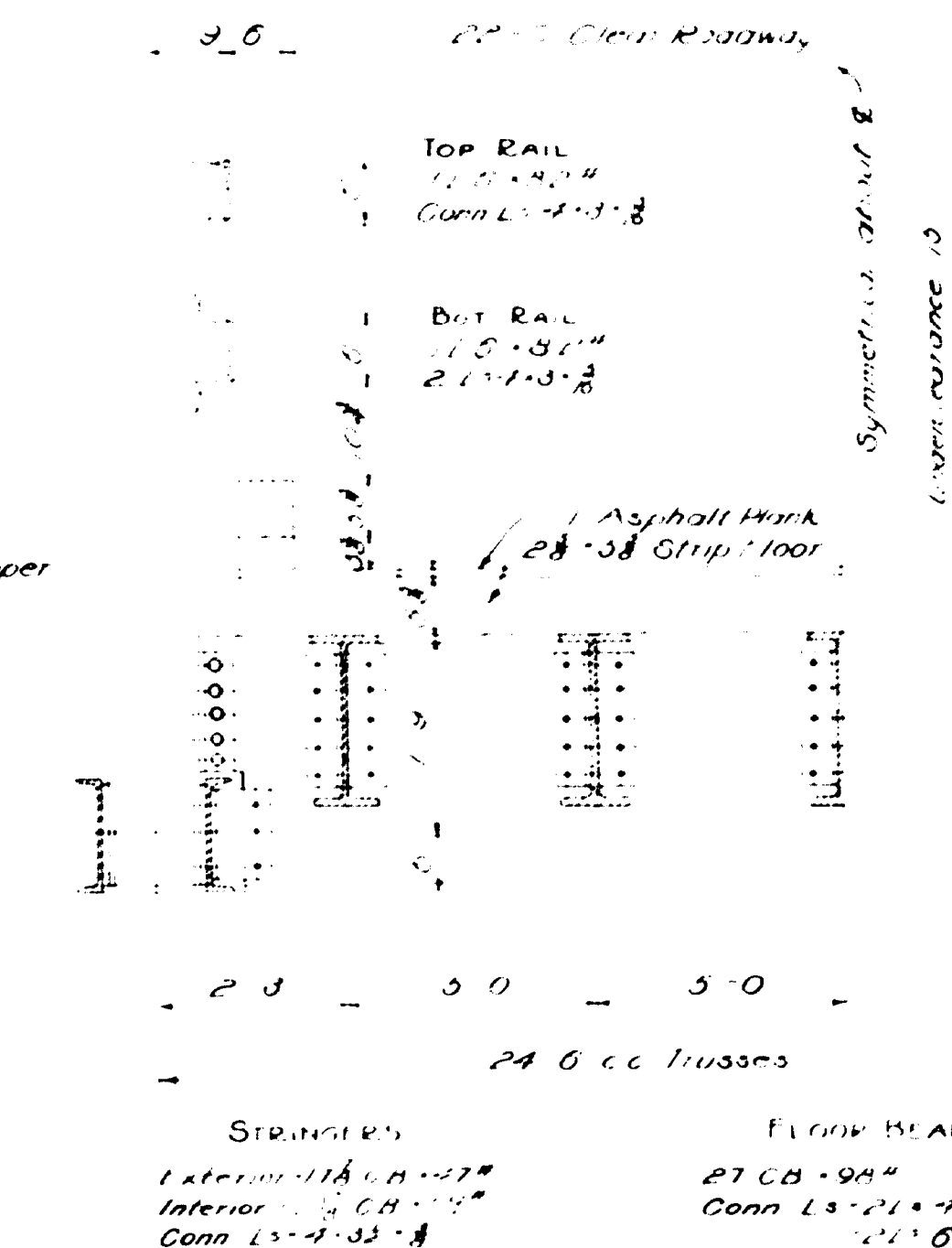
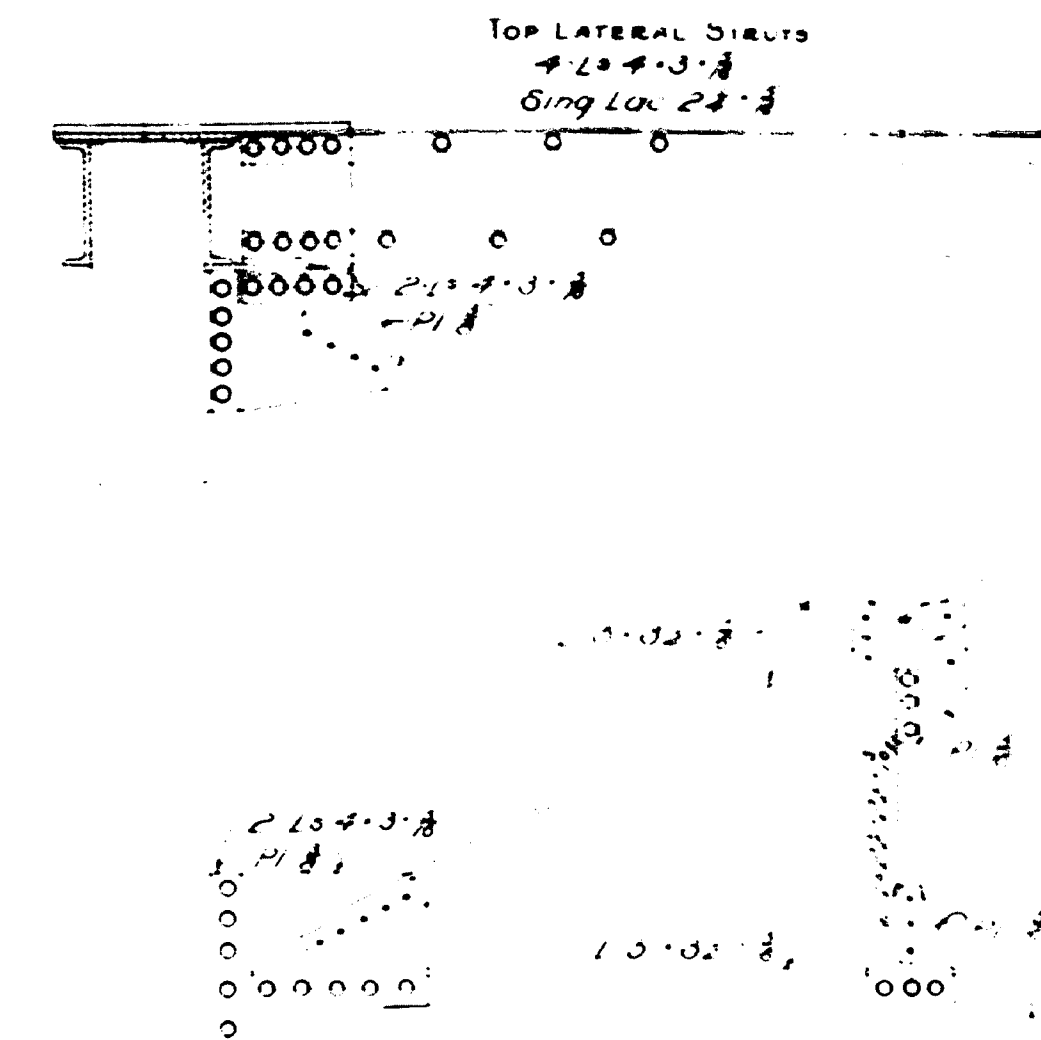
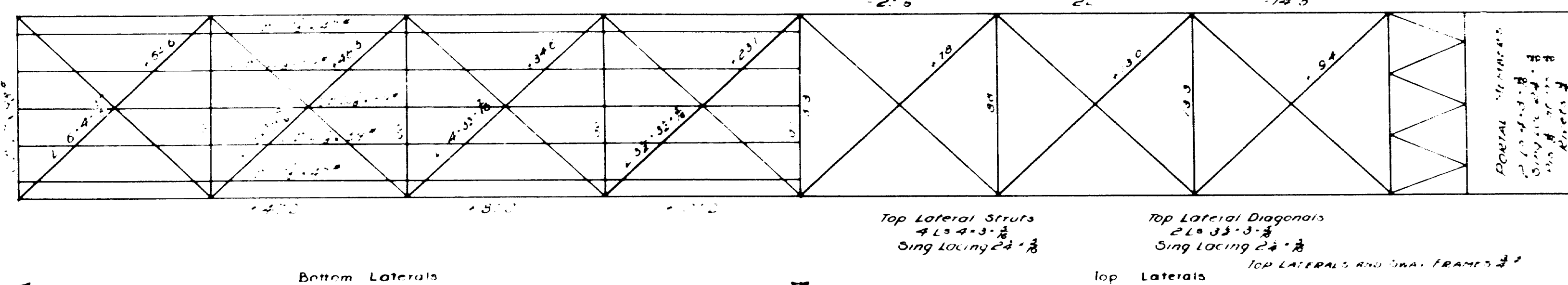


MAINE HIGHWAY COMMISSION
BRIDGE DIVISION
SECOND OTTER STREAM BRIDGE
OVER
OTTER STREAM
IN THE TOWN OF
MILFORD-PENOBSCOT, CNTY.
SURVEY PLAN
SHEET 2016 AUGUSTA ME JAN 201931

26-183

SURVEYED BY
PLOTTER

1 2 3 4 5 INCHES



PATRIOT STRINGER

| | | | | |
|-----|------|------|----|----------------|
| DLM | -210 | 2873 | 13 | 22330 |
| L.M | -43 | 940 | 13 | 331400 |
| I | -331 | | | 281800 |
| | | | | <u>1336300</u> |

S 1336300 72.4
1900

USF 178 CB - 41"

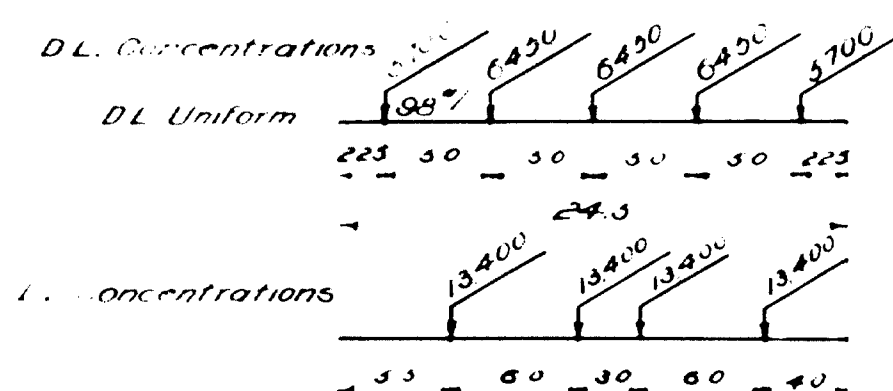
INTERIOR STRINGERS

DLM = 243 + 2823' A13 = 299,200 #
LLM = 243 + 940023 711' 25.6"
I = 931 243 + 2823'

C (S) 100
JACO

CUT 22' CM = 34'

FLOOR BEAM



RL LLC = $\frac{4 \times 10 \times 13 \times 19}{243} \times 13,400 = 23,59$

$DLLM = 13375 \cdot 12.5 - 6400 \cdot 3$ $3700 \cdot 10 = 99,100^{**}$

$LCLM = 23,139 \cdot 11.5 - 13,400 \cdot 600 = 208,900$

$\quad \quad \quad 1 \cdot 282 = 34,900$

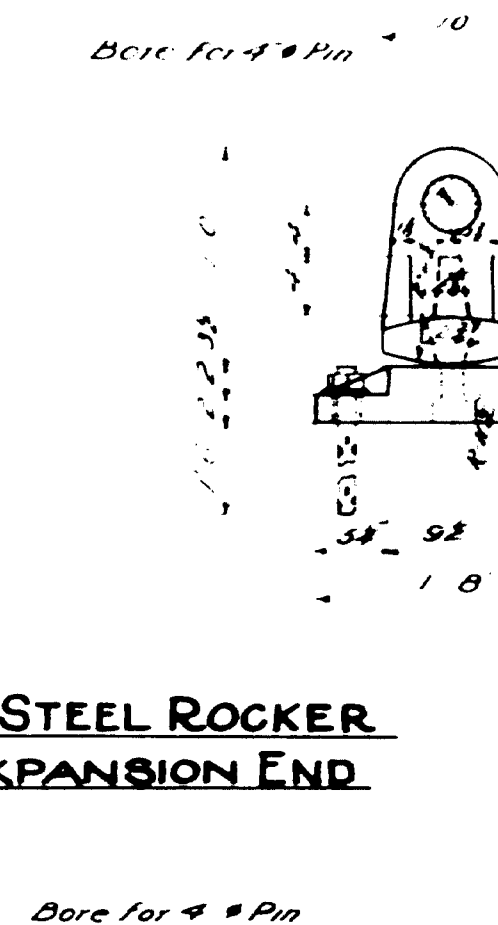
$DLUM = 98 \cdot 243^2 \cdot 8 = 7,400$

$= 374,300^{**}$

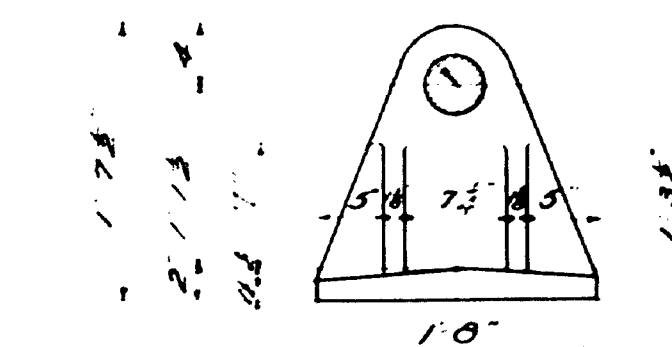
$S = \frac{374,300}{1500} = 249.5$

Use 27 GB * 98 *

CAST STEEL ROCKER EXPANSION END



CAST STEEL SHOE- FIXED END



Top Lateral Struts
 $4 L \times 4 \times 3 \cdot \frac{3}{8}$
 Sing Locing $2 \times 4 \cdot \frac{3}{8}$

Top Lateral Diagonals
 $2L = 33 \cdot 3 \cdot \frac{1}{2}$
 Sing Locing $24 \cdot \frac{1}{2}$

TOP LATERALS AND CHA. FRAMES $\frac{1}{2}$ "

1 1/2 9 bolts Hex nuts sq head

1 1/2" Holes for 12 #1-10 swedge
anchor bolts hex nuts + 3 washers
1 1/2" Holes for 15 #9 bolts hex nuts +
39 heads, 3 washer (bent)

1 1/2" Holes for 1 1/2" x 10" Sledge
anchor bolts hex nuts + 3"
washers

~NOTES~

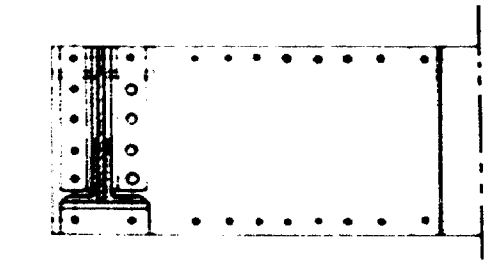
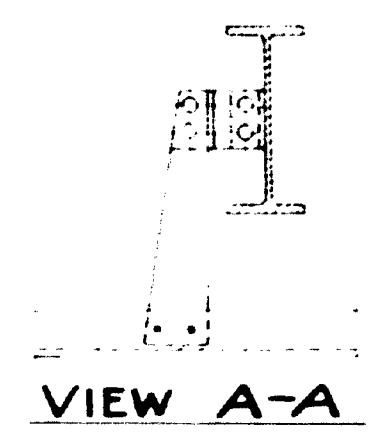
To be detailed in accordance with STATE HIGHWAY COMMISSION'S SPECIFICATIONS for STEEL HIGHWAY BRIDGES. Other sections of equal strength may be substituted for those shown, but no allowance for extra weight will be allowed caused by such substitutions. All field connections of main members to be sub-punched and reamed. Vertical end plates or with main bars assembled. Rivets in end plates, cross, lower laterals and floor to be 5/8" dia. laterals, main floor and rivets to be 3/4"

LOADING - H-15
WIND ~ 50# per sq. ft. on 1 1/2 times the area of the truss
as seen in side elevation for top system 30# per sq ft. on
1 1/2 times the area of the truss as seen in side elevation plus
200" in ft. for bottom system.
DEAD LOAD ~ 118 # per lin. ft. of truss
UNIT STRESSES - Tension = 18000 #/in.
Compression = $P = \frac{18000}{\frac{(L)^2}{12 \times 1000}}$

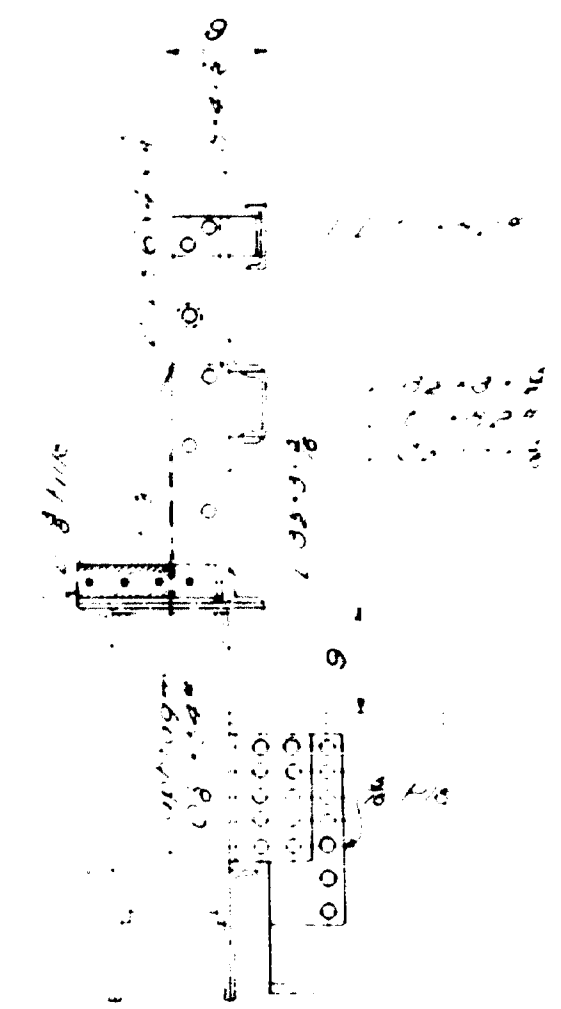
TYPICAL HALF CROSS SECTION

STATE HIGHWAY COMMISSION
BRIDGE DIVISION
SECOND OTTER STREAM BRIDGE
V.F.A.
OTTER STREAM
IN THE TOWN OF
MILFORD
PENOBSCOT CO.
STREET SHEET
Augusta Me
Sheet 4 of 6
July 1936

TYPICAL LOWER LATERAL
INTERSECTION AND HANGER SUPPORT



VIEW C-C
Lateral to center



VIEW-B-B

TOP LATERALS
Struts 4.5 x 4.5 x 3/8 SL 24' 0"
Diagonals 2.5 x 3.5 x 3/8 SL 24' 0"
R. 0.5 x 4

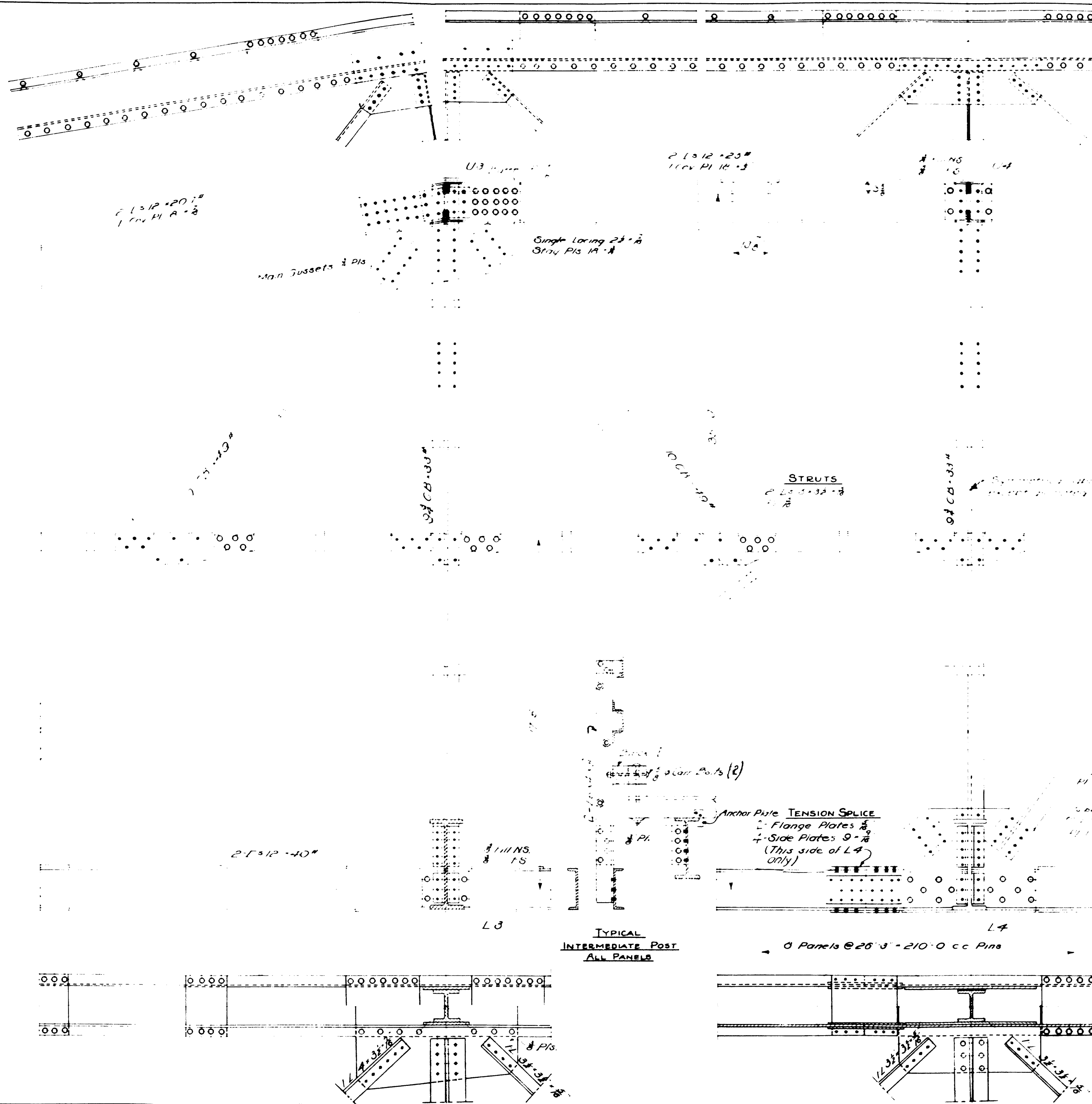
STRUTS

TENSION SPICE
Gusset Plates 7
Side Plates 9
Rills 9

STATE HIGHWAY COMMISSION
BRIDGE DIVISION
SECOND OTTER STREAM BRIDGE
OVER
OTTER STREAM
IN THE TOWN OF
MILFORD
PENOBSCOT CO.
STRUCTURAL STEEL
August 1936
Sheet 5 of 6

26-186

Designer: C. P.
Plan: Hamilton
Traced: Hamlin
Checked: G. H.



TIMBER SCHEDULE

| MARK | NO REQD | DRESS | FIN. SIZE | LENGTH | LOCATION |
|------|---------|-------|-----------|--------|------------|
| 1 | 930 | D4S | 2 1/2 x 8 | 17 0 | Deck Floor |
| 2 | 7 | | 2 1/2 x 8 | 17 0 | Deck Floor |
| 3 | 7 | | 2 1/2 x 8 | 17 0 | Deck Floor |
| 4 | 2 | | 2 1/2 x 8 | 17 0 | Deck Floor |
| 5 | 138 | | 2 1/2 x 8 | 17 0 | Deck Floor |
| 6 | 24 | | 2 1/2 x 8 | 17 0 | Deck Floor |
| 7 | 4 | | 2 1/2 x 8 | 17 0 | Deck Floor |
| 8 | 4 | | 2 1/2 x 8 | 17 0 | Deck Floor |
| 9 | 4 | | 2 1/2 x 8 | 17 0 | Deck Floor |

12 1/2 sq ft. Asphalt Pavement
10 1/2 sq ft. Asphalt Pavement

BOLT LIST - TIMBER

| SIZE | NO | KIND | LENGTH | WASHERS | LOCATION |
|------|-----|------|--------|---------|------------|
| 3/8" | 280 | Flat | 1 1/2" | 280 | Deck Floor |
| 3/8" | 60 | Flat | 1 1/2" | 60 | Deck Floor |
| 3/8" | 40 | Flat | 1 1/2" | 40 | Deck Floor |
| 3/8" | 24 | Flat | 1 1/2" | 24 | Deck Floor |
| 3/8" | 24 | Flat | 1 1/2" | 24 | Deck Floor |

REINFORCING STEEL - SUBSTR

| MARK | SIZE | NO REQD | LENGTH | LOCATION |
|------|------|---------|--------|------------|
| 1 | 6 | 26 | 17 0 | Deck Floor |
| 2 | 6 | 26 | 17 0 | Deck Floor |
| 3 | 6 | 26 | 17 0 | Deck Floor |
| 4 | 6 | 26 | 17 0 | Deck Floor |
| 5 | 6 | 26 | 17 0 | Deck Floor |
| 6 | 6 | 26 | 17 0 | Deck Floor |
| 7 | 6 | 26 | 17 0 | Deck Floor |
| 8 | 6 | 26 | 17 0 | Deck Floor |
| 9 | 6 | 26 | 17 0 | Deck Floor |

All steel to be plain bars at structural grade.
All dimensions to center lines of steel.

PLAN

APRON PLATE

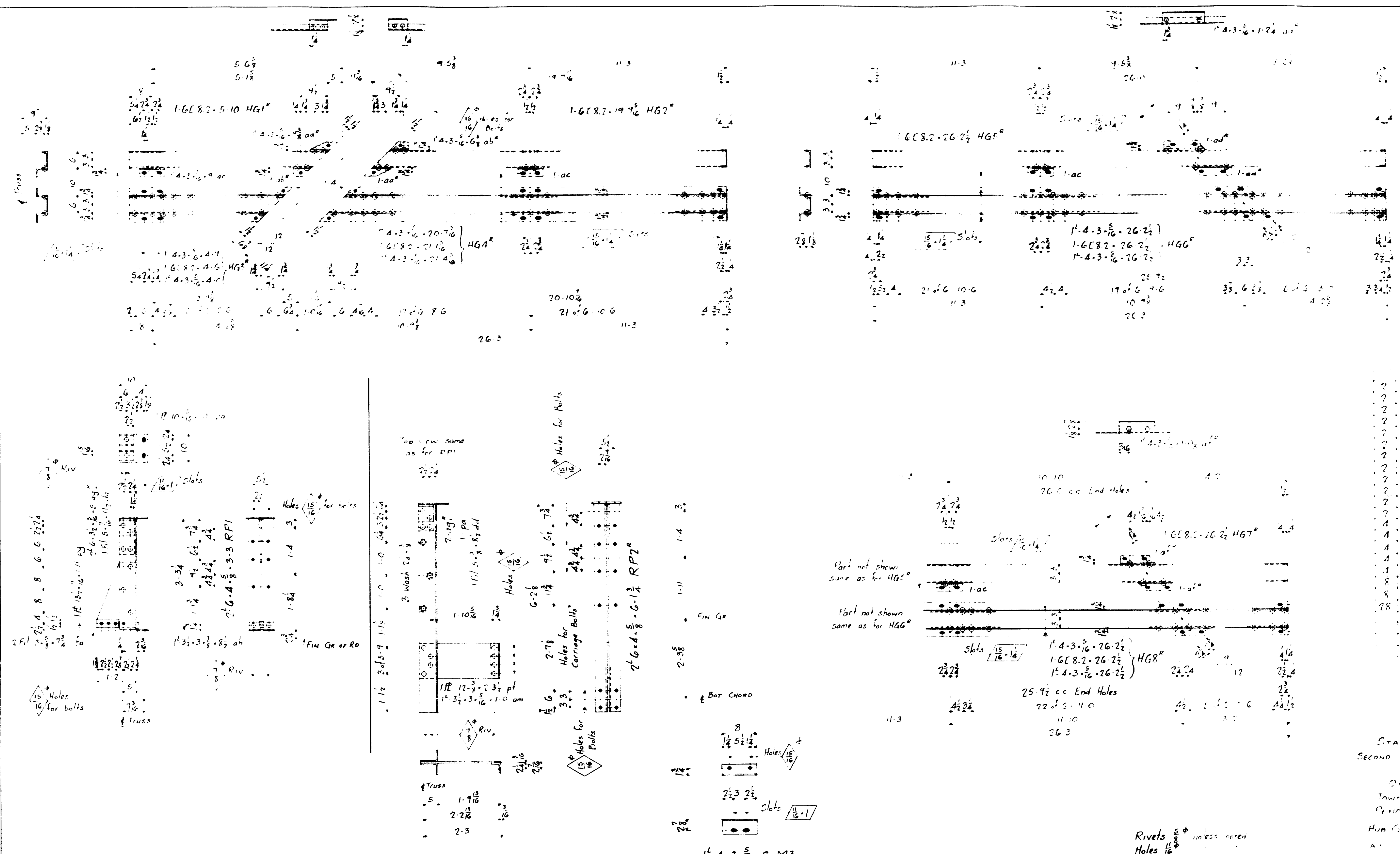
1/2" x 4" x 20'

LONGITUDINAL SECTION FLOOR

See sheet 2 for TRANSVERSE SECTION

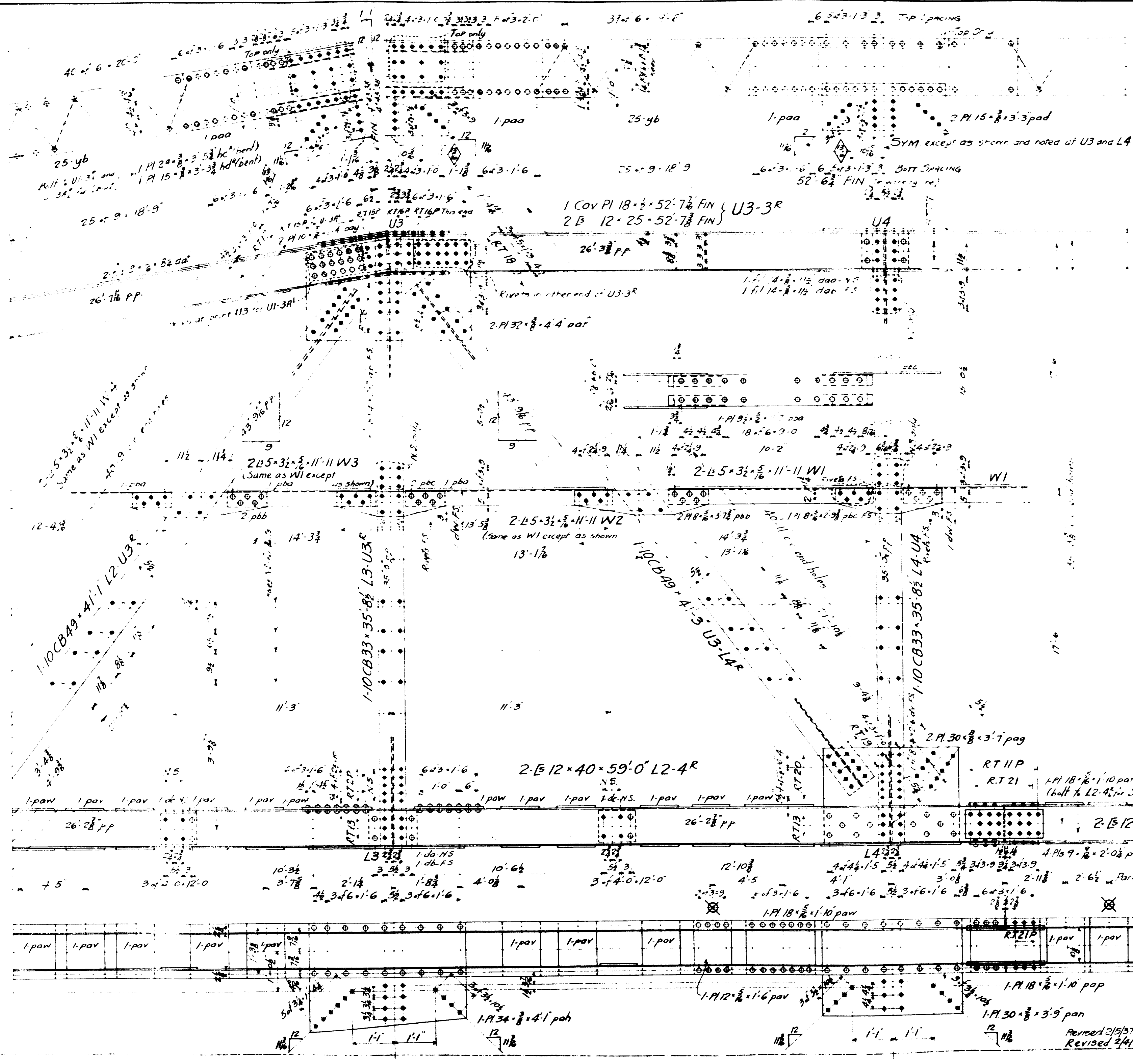
STATE HIGHWAY COMMISSION
BRIDGE DIVISION
SECOND OTTER STREAM BRIDGE
OVER
OTTER STREAM
IN THE TOWN OF
MILFORD
PENOBSCOT CO.
STRUCTURAL STEEL
Sheet 6 of 6
August, Me. July 1939

Designed by
Allen Kimball
Checked by
C. B.



| | | |
|---|---------------------|------------------|
| 2 | 1-4-3-5/16-26-2 1/2 | HG1 ^R |
| 2 | 1-4-3-5/16-26-2 1/2 | HG1 ^L |
| 2 | 1-4-3-5/16-26-2 1/2 | HG2 ^R |
| 2 | 1-4-3-5/16-26-2 1/2 | HG2 ^L |
| 2 | 1-4-3-5/16-26-2 1/2 | HG3 ^R |
| 2 | 1-4-3-5/16-26-2 1/2 | HG3 ^L |
| 2 | 1-4-3-5/16-26-2 1/2 | HG4 ^R |
| 2 | 1-4-3-5/16-26-2 1/2 | HG4 ^L |
| 2 | 1-4-3-5/16-26-2 1/2 | HG5 ^R |
| 2 | 1-4-3-5/16-26-2 1/2 | HG5 ^L |
| 2 | 1-4-3-5/16-26-2 1/2 | HG6 ^R |
| 2 | 1-4-3-5/16-26-2 1/2 | HG6 ^L |
| 2 | 1-4-3-5/16-26-2 1/2 | HG7 ^R |
| 2 | 1-4-3-5/16-26-2 1/2 | HG7 ^L |
| 2 | 1-4-3-5/16-26-2 1/2 | HG8 ^R |
| 2 | 1-4-3-5/16-26-2 1/2 | HG8 ^L |
| 2 | 1-4-3-5/16-26-2 1/2 | RPI |
| 2 | 1-4-3-5/16-26-2 1/2 | RP2 ^R |
| 2 | 1-4-3-5/16-26-2 1/2 | RP2 ^L |
| 2 | 1-4-3-5/16-26-2 1/2 | M3 |

STATE OF MAINE
SECOND CREEK BRIDGE
DIEN
OTHER STREAM
TOWN OF MILLBORD
PERKINS COUNTY
HUB GRADUATE RAILING POSTS
A1
E. M. M. Elmira
E. M. M. Elmira
IN HOUSE OF E. P. Malorey
DRAWN BY G. W. 12-24-36
DRAWN BY G. W. 12-24-36
ORDER NO. H384
Shop Bill Page 51^{a+b}

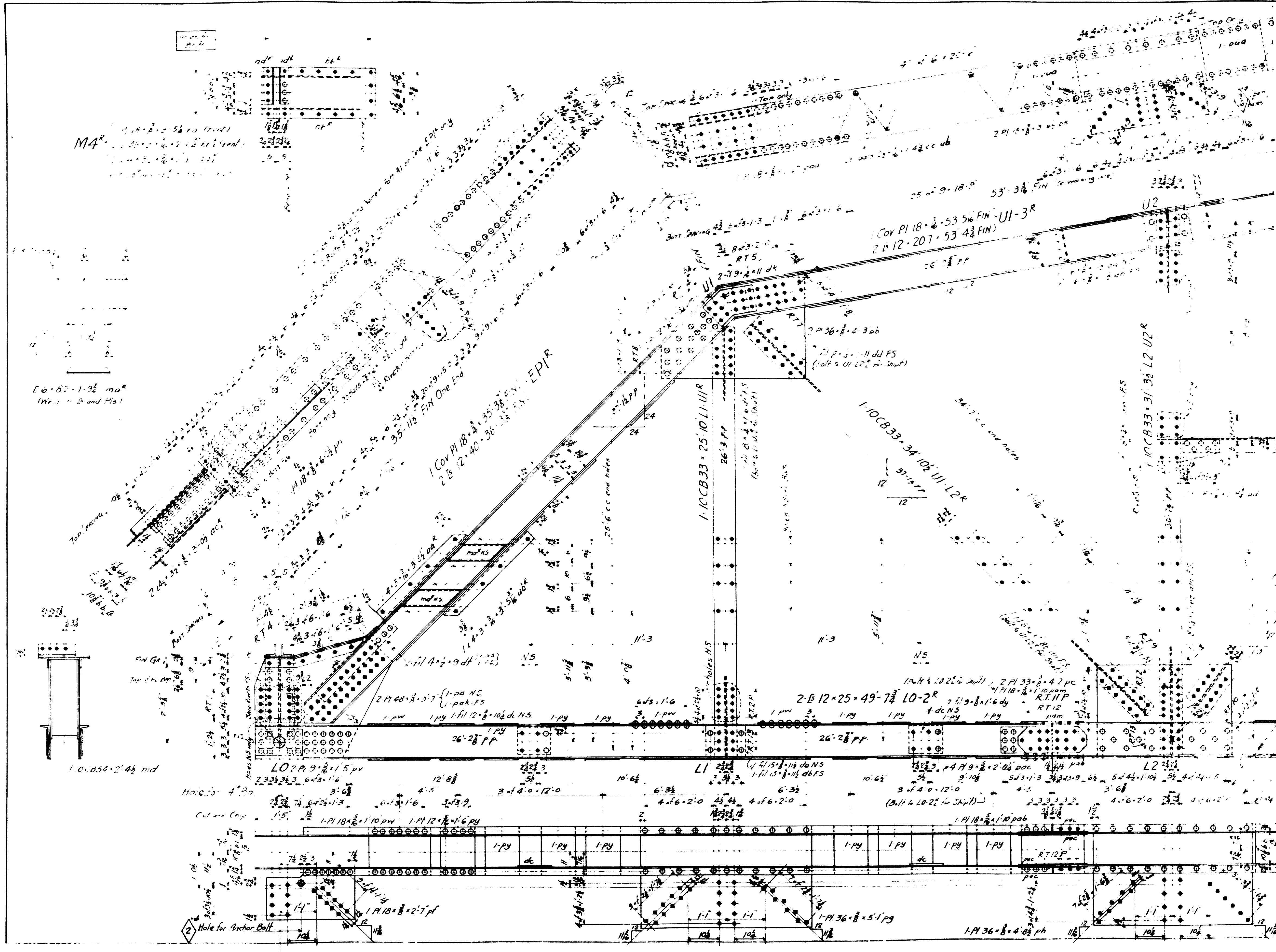


| REQUIRED | |
|----------|-------------|
| 2 | END POSTS |
| 2 | TOP CHORDS |
| 1 | |
| 1 | |
| 1 | |
| 1 | |
| 1 | |
| 1 | |
| 2 | BOTT |
| 2 | |
| 1 | |
| 1 | |
| 1 | |
| 2 | DIAGONALS |
| 2 | |
| 2 | |
| 2 | |
| 2 | |
| 2 | |
| 2 | VERTICALS |
| 2 | |
| 2 | |
| 2 | |
| 2 | |
| 2 | |
| 4 | LONG STRUTS |
| 4 | |
| 4 | |
| 4 | |
| 2 | PIECES |
| 2 | |

STATE OF MAINE
SECOND OTTER STREAM BRIDGE
OVER
OTTER STREAM
TOWN OF MILFORD
PENOBSCOT COUNTY
TRUSSES

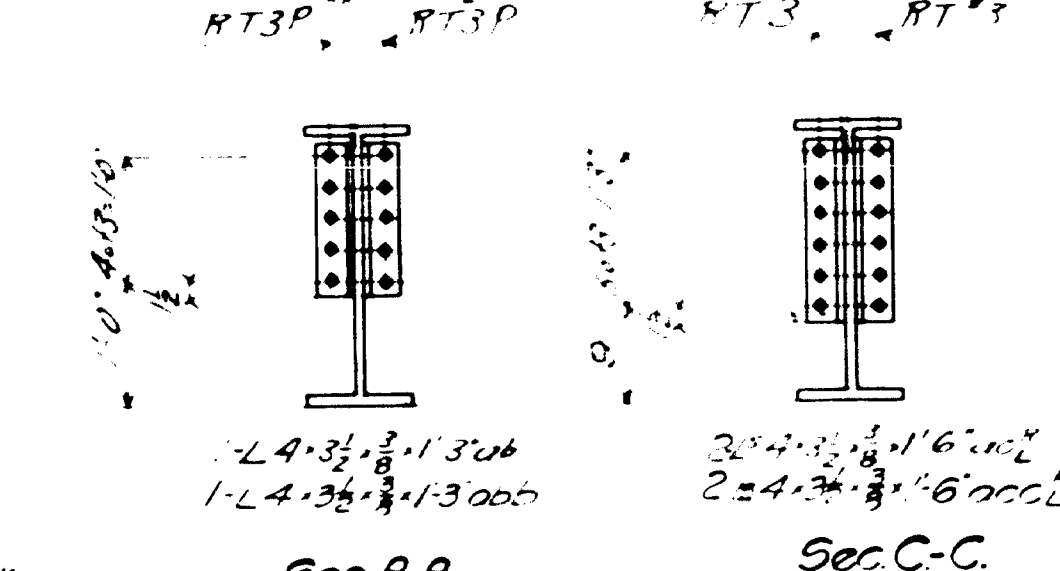
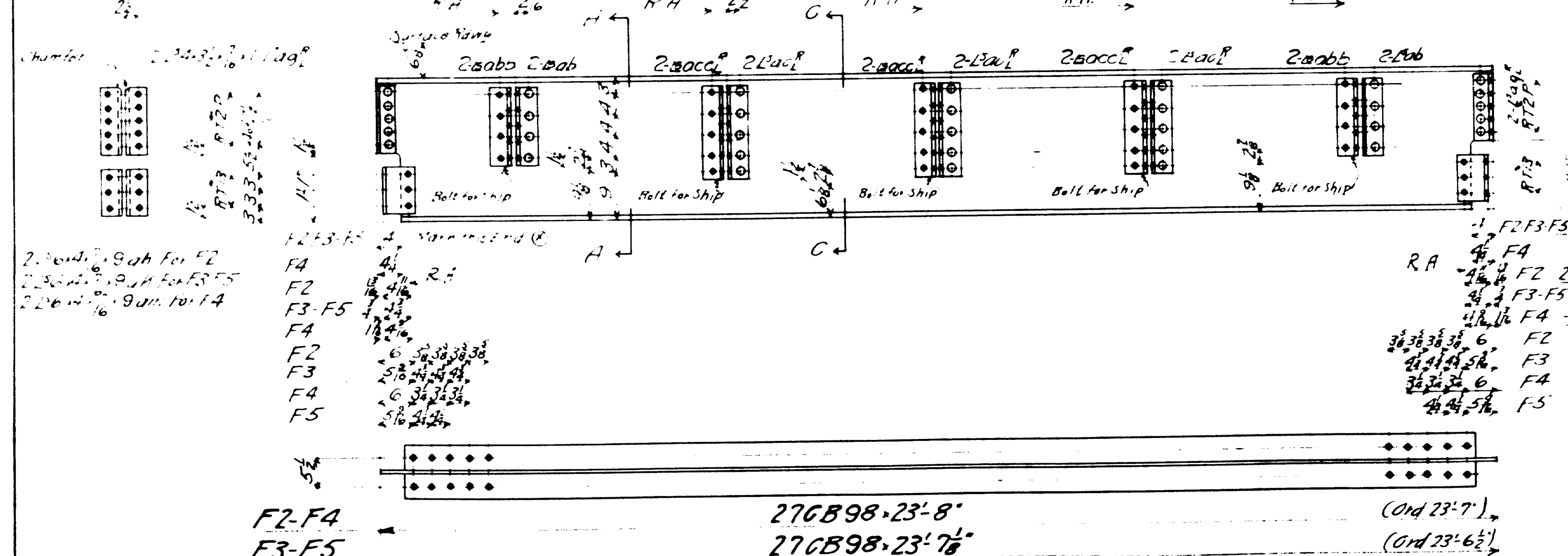
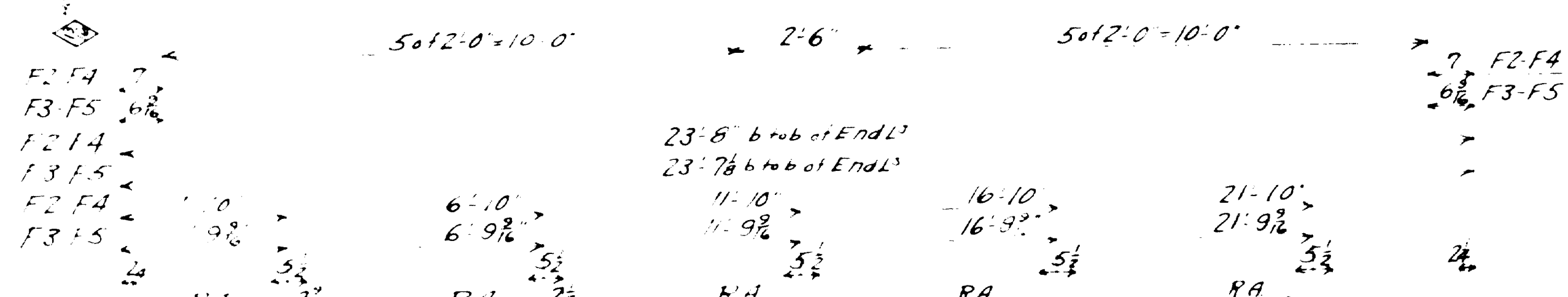
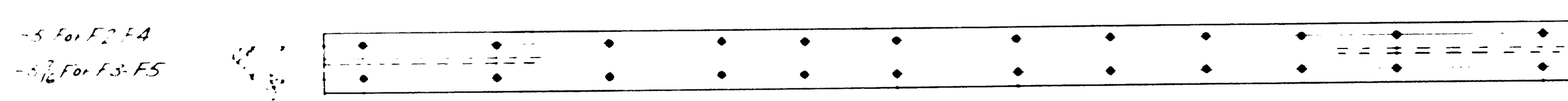
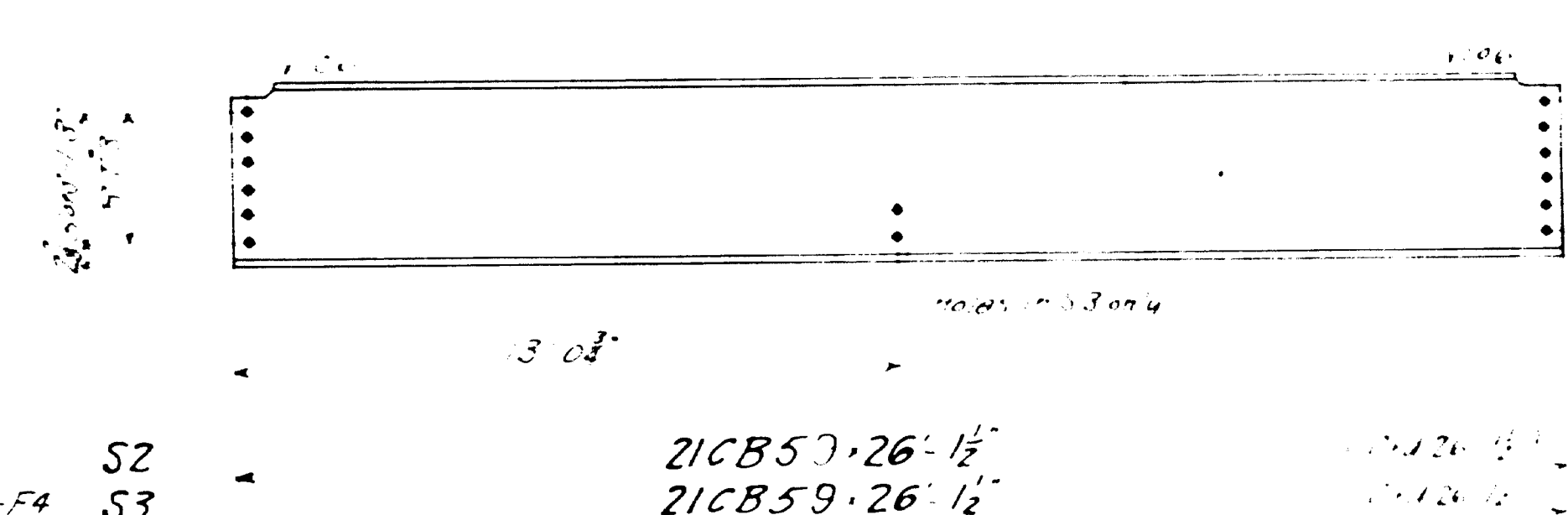
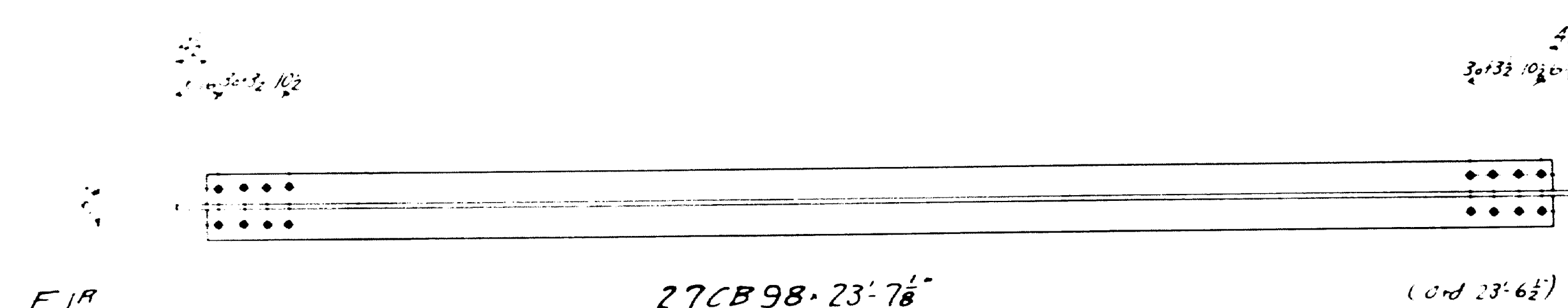
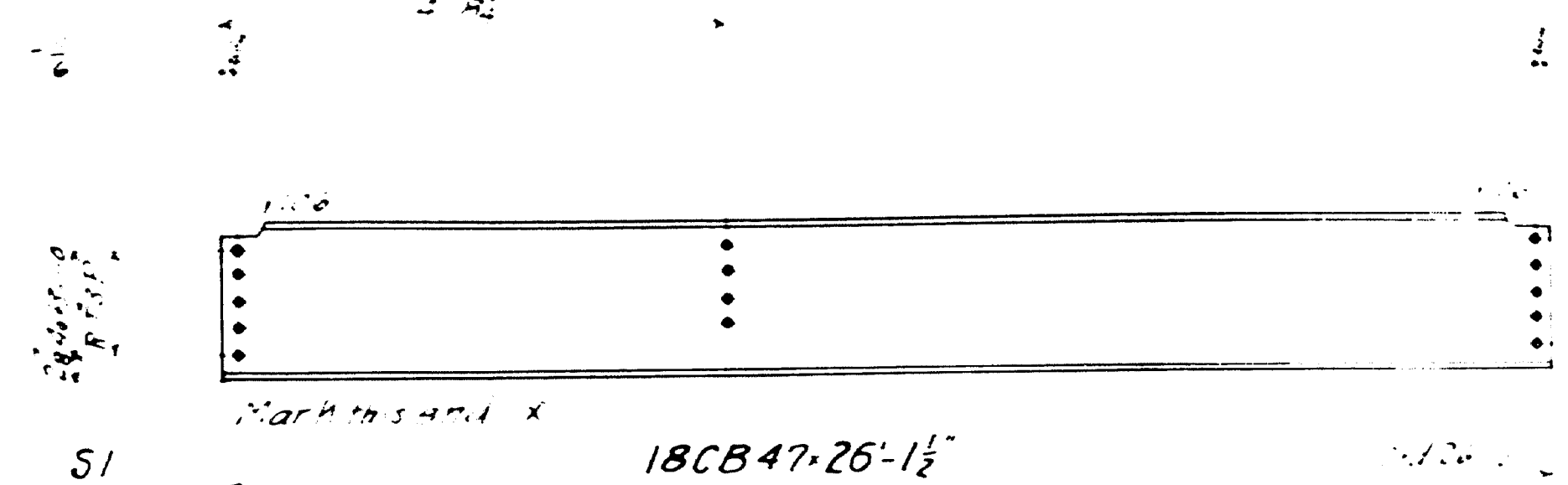
NOTES -
Rivets 8"
Holes 1/2" unless noted
Paint: Yes
Surfaces to be riveted or bolted either in shop or field shall not be painted
Holes marked RT to be punched 1/2" and reamed to 1/2" to a metal template or while assembled. If reamed, assembled parts are to be match marked.
Revised 2/19/97
Revised 2/4/97

H383 B 1 A
26-190



STATE OF MAINE
SECOND OTTER STREAM BRIDGE
OVER
OTTER STREAM
TOWN OF MILFORD
PENOBSCOT COUNTY
TRUSSES

Revised 7/4/57
H383B
1B
26-191



| R274 R2D | |
|----------|-----------------|
| One | F1 ⁹ |
| One | F1 ⁴ |
| 2 | F2 |
| 2 | F3 |
| 2 | F4 |
| One | F5 |
| 6 | S1 |
| 6 | S2 |
| 8 | S3 |

STATE OF MAINE
SECOND OTTER STREAM BRIDGE
D.P.
OTTER STREAM
TOWNE OF MILFORD
FENNABSCOT CO
FLOR HEMS STRINGERS

ELMIRA PLANT

AM. ... (...)

ELMIRA PLANT

ELMIRA PLANT

MALONEY

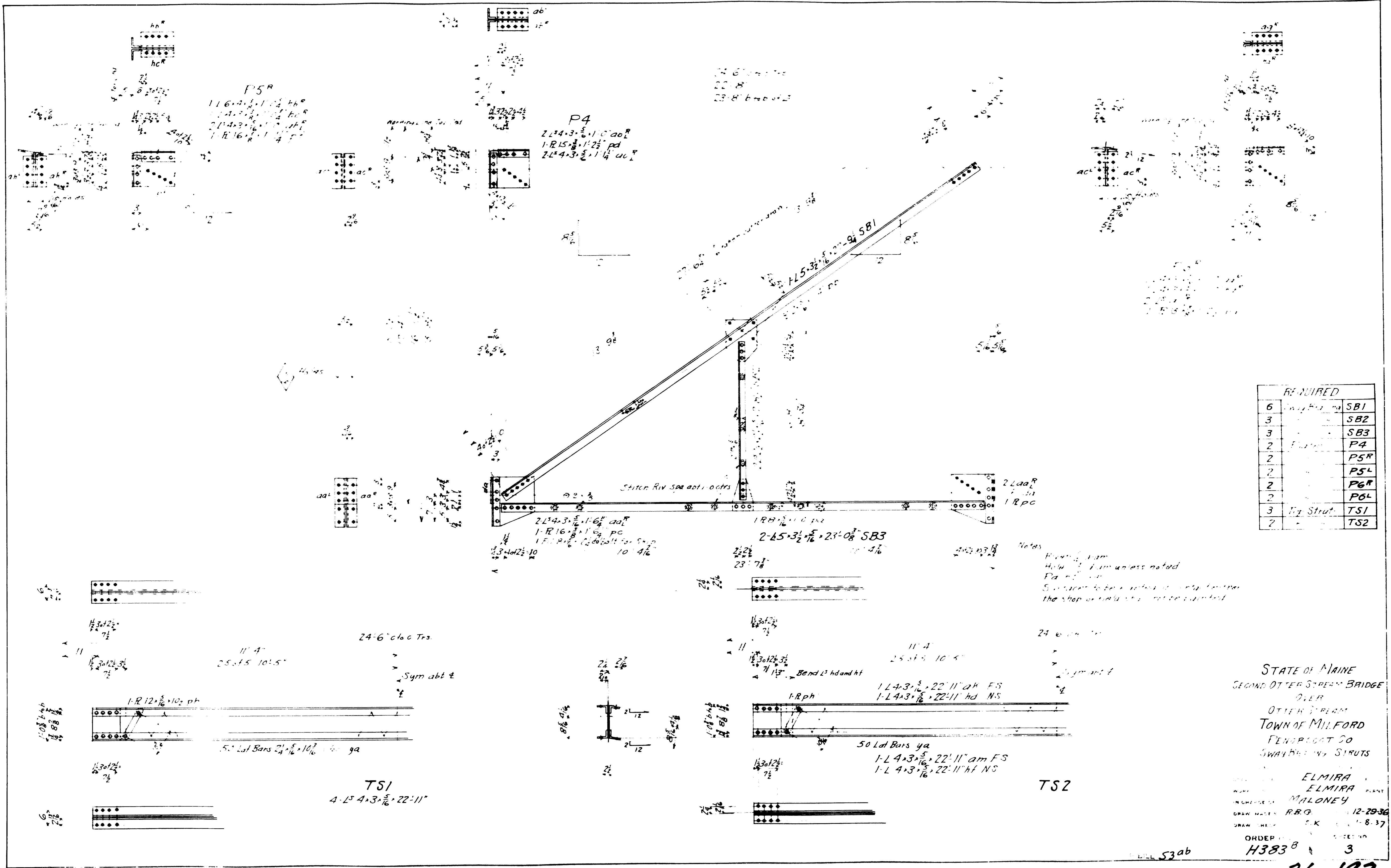
R.B.G. DATE 12-21-36

DATE 1-8-37

ORDER NO. H3838 2

Notes:

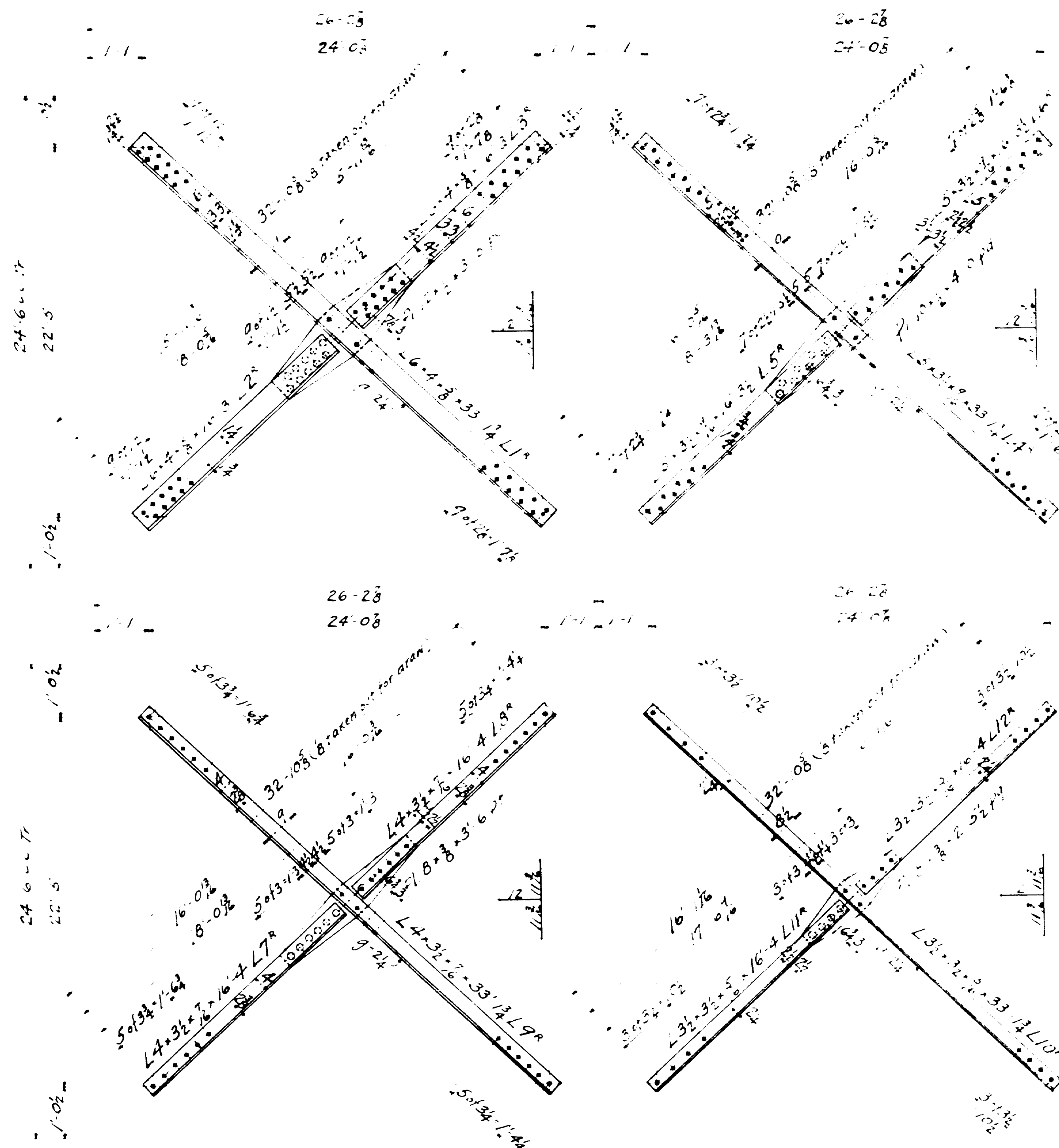
- Rivets $\frac{3}{8}$ " diam
- Holes $\frac{15}{16}$ " diam as noted
- Paint Yes
- Surfaces to be riveted in contact with or in Shop or Field shall not be painted
- Holes marked R.H. to be punched $\frac{1}{8}$ " and reamed to $\frac{1}{8}$ " with parts assembled
- Holes marked R.T. to be punched $\frac{1}{8}$ " and reamed to $\frac{1}{8}$ " to a metal template
- Holes in metal over $\frac{3}{4}$ " thick to be subpunched and reamed or drilled



STATE OF MAINE
SECOND OTTER STREAM BRIDGE
OVER
OTTER STREAM
TOWN OF MILFORD
FENNERBROT CO
SWAYBROOK STRUTS

ELMIRA
ELMIRA
MONEY
R.B.G. 12-29-36
S.K. 1-8-37
ORDER
H383 3

26-193



STATE OF MAINE
Second Otter Stream Bridge
Otter Stream
TOWN OF MILFORD
Penobscot County
TOP AND BOTTOM LATERALS

Rivets $\frac{3}{8}$ Unless Noted
Holes $\frac{15}{16}$ " "

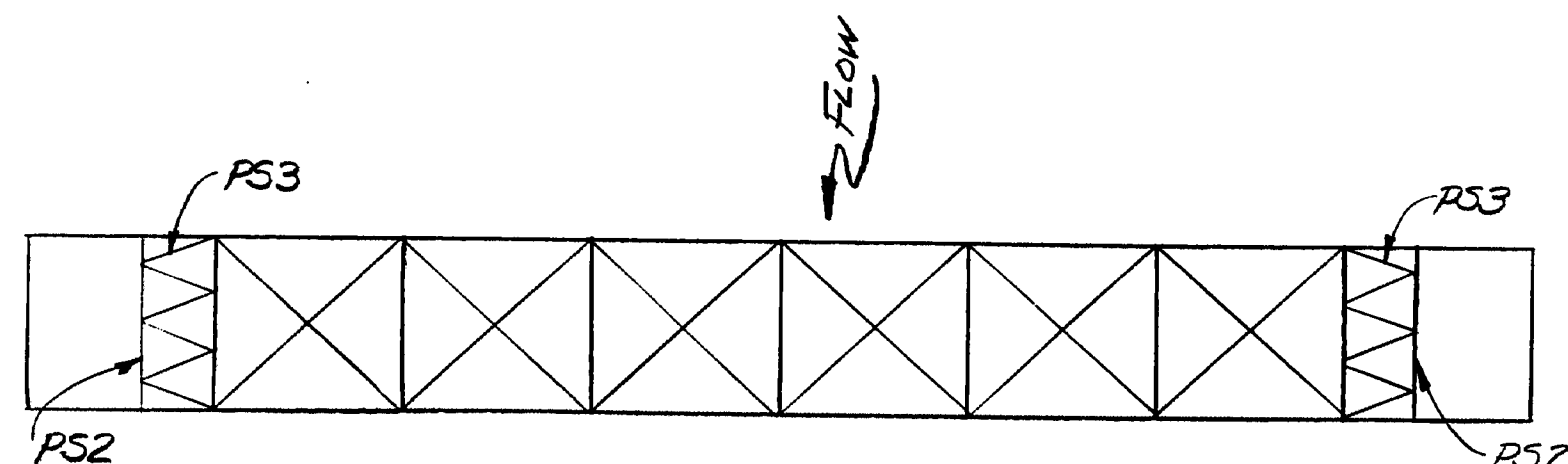
Paint - yes
Surfaces to be riveted in contact either in shop or field are not to be painted

Elmira
Elmira
Maloney
W.C. 12-22-36
"K" 1-8-36

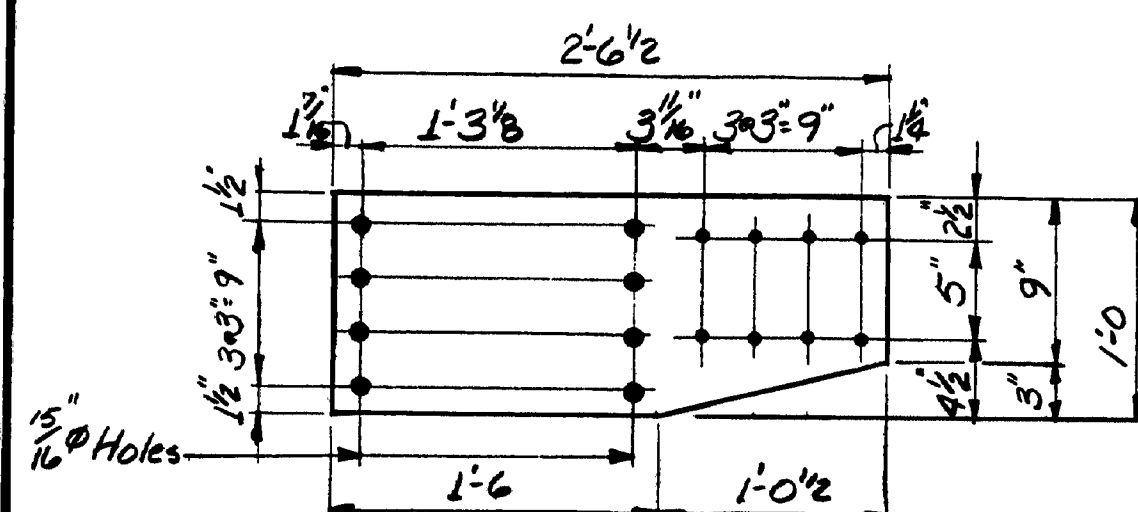
H383^B

5
26-195

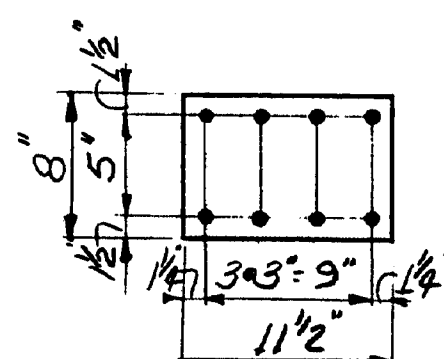
| STATE | PROJECT NUMBER | SHEET NO. | TOTAL SHEETS |
|-------|----------------|-----------|--------------|
| MAINE | | 1 | |



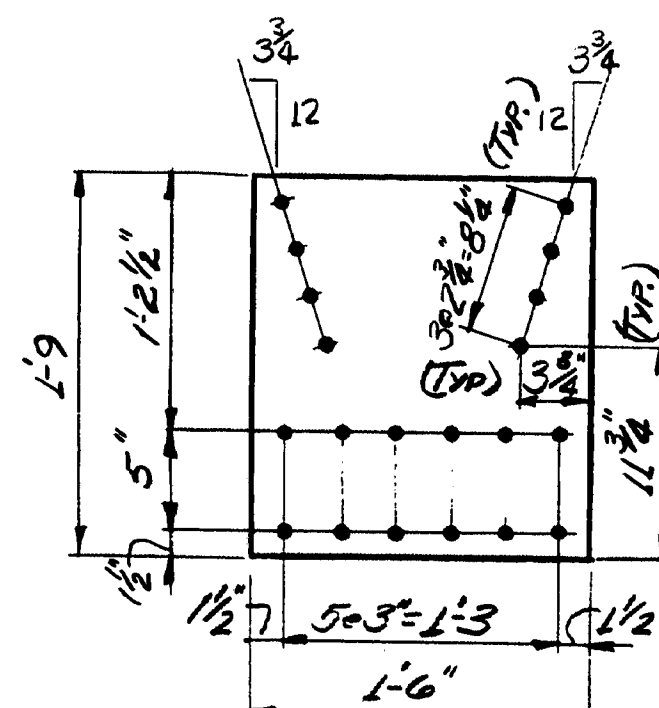
PLAN



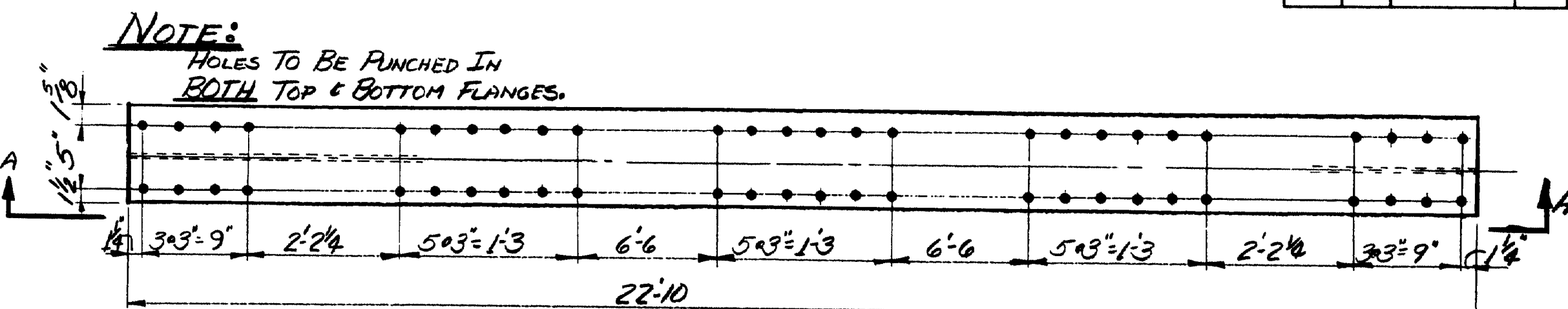
P1 ~ 8 REQ'D
P1 ~ 8" x 12" x 2'-6 1/2"



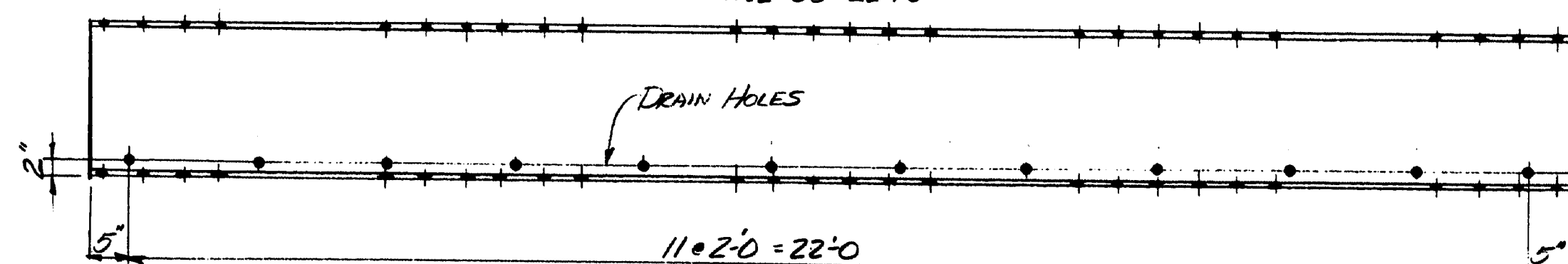
P2 ~ 12 REQ'D
P2 ~ 8" x 21" x 1'-6"



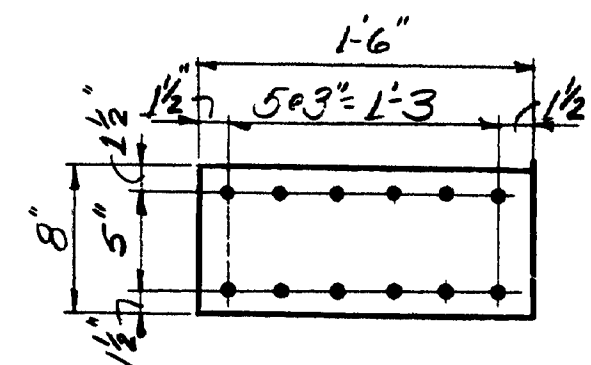
P3 ~ 8 REQ'D
P3 ~ 8" x 12" x 2'-6 1/2"



P52 ~ 2 REQ'D
P52 ~ W12 x 50 x 22'-10"



NOTE: DRAIN HOLES TO BE PLACED @ BOTTOM OF PORTAL WHEN INSTALLING P52. VIEW A-A



P4 ~ 12 REQ'D
P4 ~ 8" x 21" x 1'-6"

SCOPE OF WORK

REMOVE EXISTING BOTTOM PORTAL STEUTS, P52, INSTALL NEW P52. Repair sway bracing as necessary.

| MADE NO. | SHAPE | LENGTH | WT. | REMARKS |
|----------|--------------------------------|------------|-------|---------|
| P1 | 8 R 3/8" x 12" | 2' 6 1/2" | 312 | |
| P2 | 12 R 3/8" x 21" | 1' 6" | 483 | |
| P3 | 8 R 3/8" x 12" | 2' 6 1/2" | 312 | |
| P4 | 12 R 3/8" x 21" | 1' 6" | 483 | |
| P52 | 2 W12 x 50 | 22' 10" | 2,283 | |
| P53 | 2 W12 x 50 | 22' 10" | 2,283 | |
| P6 | 4 x 5 1/2" x 3/4" | 23' 0 3/8" | 602 | NO FAB. |
| P7 | 70 1/2" x 3/25 A-325 H.S. BOLT | 0' 3/8" | 52 | |
| P8 | 340 3/4" x A-325 H.S. BOLT | 0' 2 1/2" | 220 | |

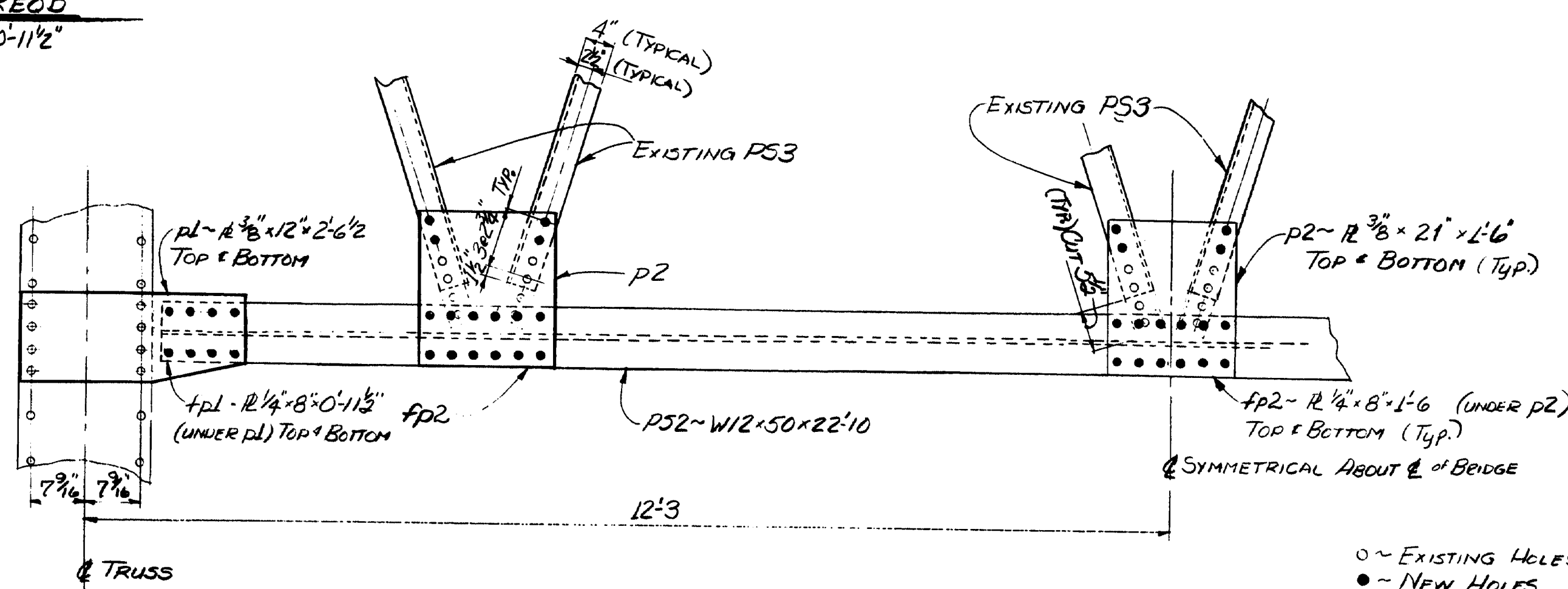
Above 1/8" BOLTS TO INCLUDE (1) A-325 NUT & (1) BENTON CIRCULAR WASHER
Above 3/4" BOLTS TO INCLUDE (1) A-325 NUT & (1) FLAT CIRCULAR WASHER.

EST. WT. = 4,327 *

111-24

GENERAL NOTES

1. ALL STEEL TO BE A-36.
2. ONE SHOP COAT OF BASIC LEAD SILICO CHROMATE.
3. HOLES TO BE 1/16" UNLESS NOTED.
4. ANGLES AND BOLTS HAVE BEEN PROVIDED TO REPAIR 2 SWAY BRACES



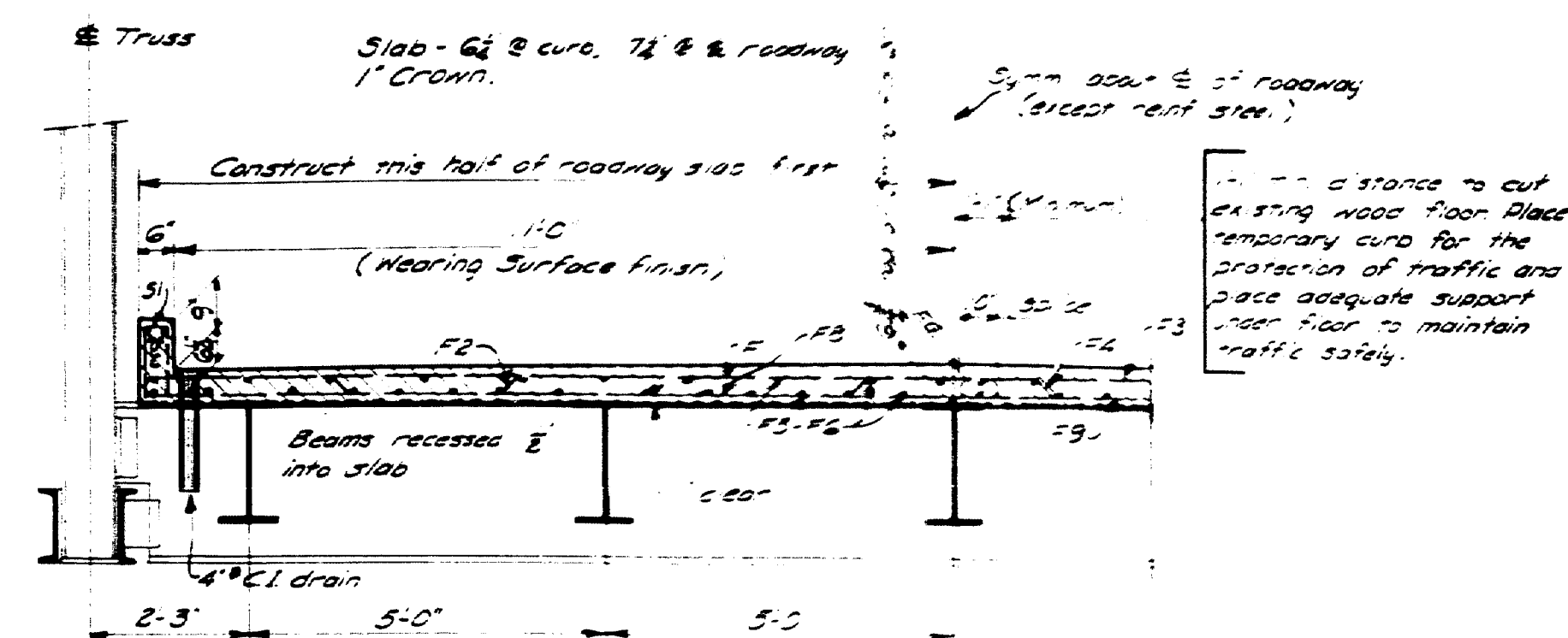
HALF PORTAL ELEV.

○ ~ EXISTING HOLES
● ~ NEW HOLES

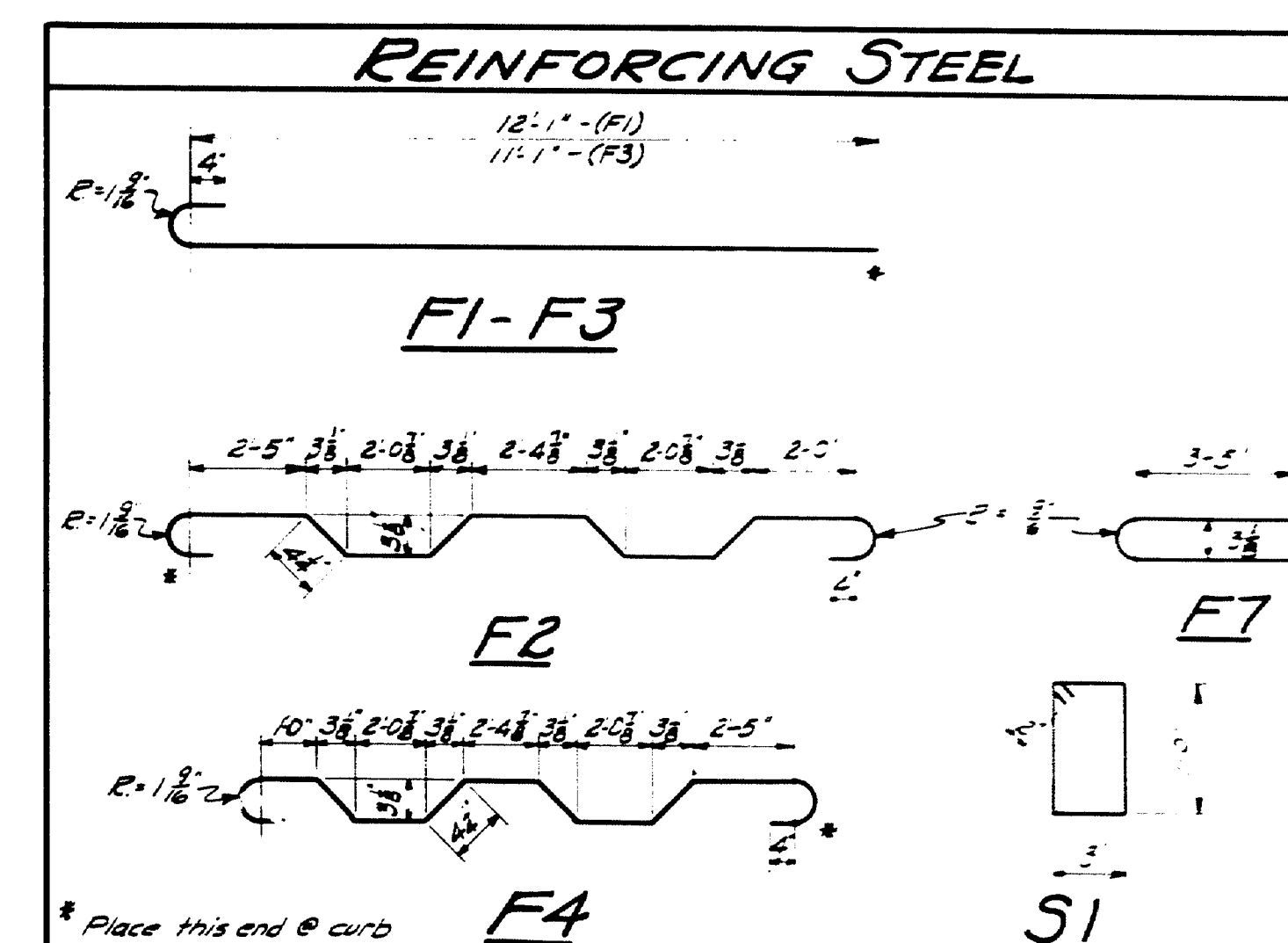
| PROJECT | DESIGN | ENGINEER | DATE |
|---------|-------------------|----------|------|
| PLANS | DESIGN - DETAILED | 10/20/88 | 7-88 |
| | CHECKED | 10/20/88 | |
| | REVISIONS | | |
| | FIELD CHANGES | | |

BRUNING 44-122-4710-1

| |
|--|
| STATE OF MAINE DEPARTMENT OF TRANSPORTATION #2754 SECOND OTTER STREAM BR. OVER OTTER STREAM IN THE TOWN OF MILFORD IN PENOBSCOT COUNTY PORTAL REVISION SHEET 1 OF 1 AUGUSTA, MAINE JAN, 1988 |
|--|



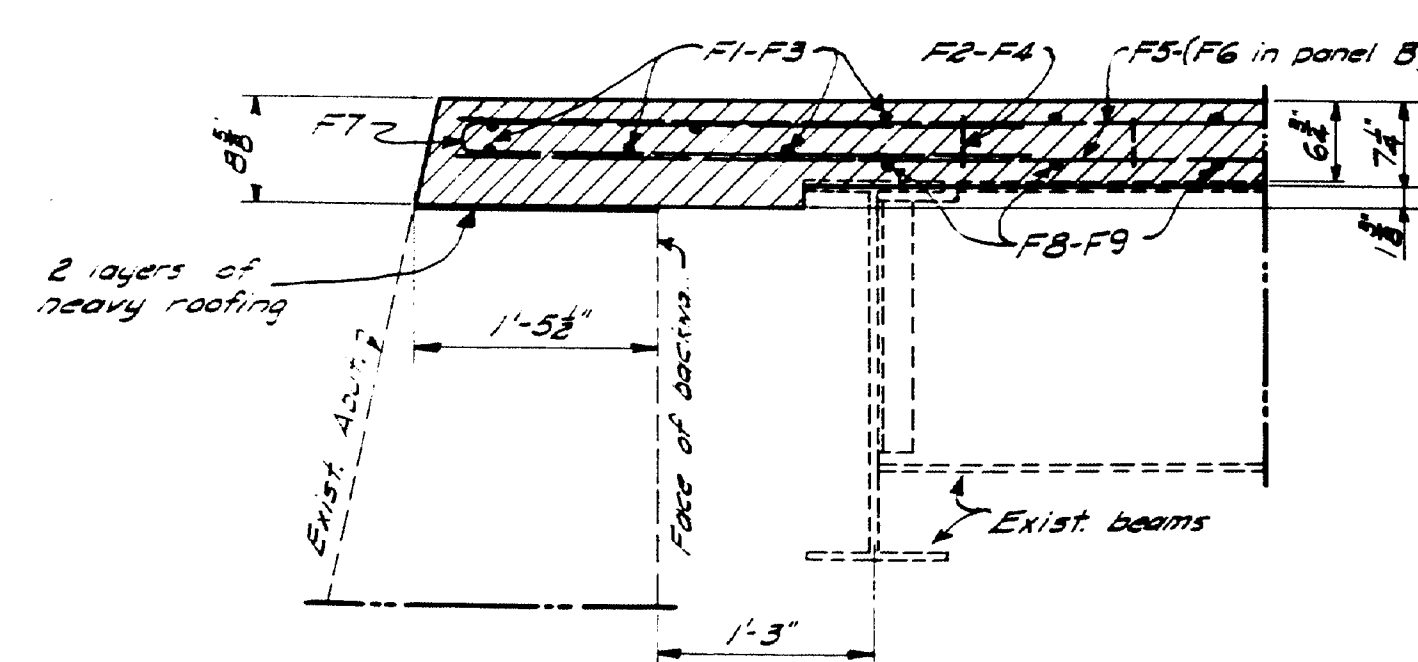
TYPICAL TRANSV. SECT.



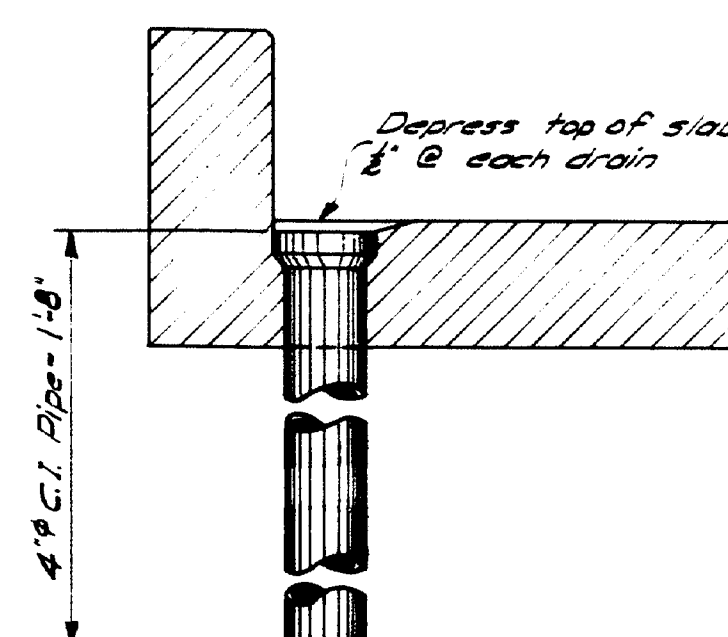
| Bent Bars | | | | Straight Bars | | | |
|-----------|------|-----|---------|--------------------|------|------|--------|
| Mark | Size | No. | Length | Location | Mark | Size | Length |
| F1 | #4 | 202 | 12'-10" | Slab, panels A & B | F5 | #4 | 96 |
| F2 | #4 | 184 | 13'-10" | " " | F6 | #4 | 288 |
| F3 | #4 | 202 | 11'-10" | " " | F8 | #4 | 92 |
| F4 | #4 | 184 | 12'-10" | " " | F9 | #4 | 192 |
| F7 | #4 | 44 | 7'-3" | Slab - Panel A | | | |
| | | | | | C1 | #4 | 27 |
| | | | | | C2 | #4 | 24 |
| S1 | #4 | 436 | 2'-10" | Curos | | | |

Dimensions to \pm bars. All reinforcing bars to conform to A.S.T.M. Specifications A 305-49.

Concrete to be class A.



SECT. A-A



CAST IRON DRAIN
16 - Req'd.

| | |
|--|---------------|
| PLAN - Clark Check - | BRIDGE - 2754 |
| STATE HIGHWAY COMMISSION BRIDGE DIVISION | |
| SECOND OTTER STREAM BRIDGE OVER OTTER STREAM IN THE TOWN OF MILFORD - PENOBSCOT COUNTY FLOOR PLAN | |
| SHEET 1 OF 1 AUGUSTA, MAINE SEPTEMBER 1930 | |

